



Cambridge International Examinations
Cambridge International General Certificate of Secondary Education

CANDIDATE
NAME

--

CENTRE
NUMBER

--	--	--	--	--

CANDIDATE
NUMBER

--	--	--	--



ENVIRONMENTAL MANAGEMENT

0680/41

Paper 4

October/November 2016

1 hour 30 minutes

Candidates answer on the Question Paper.

No Additional Materials are required.

READ THESE INSTRUCTIONS FIRST

Write your Centre number, candidate number and name on all the work you hand in.

Write in dark blue or black pen.

You may use an HB pencil for any diagrams or graphs.

Do not use staples, paper clips, glue or correction fluid.

DO NOT WRITE IN ANY BARCODES.

Answer **all** questions.

Electronic calculators may be used.

You may lose marks if you do not show your working or if you do not use appropriate units.

Study the appropriate source materials before you start to write your answers.

Credit will be given for appropriate selection and use of data in your answers and for relevant interpretation of these data. Suggestions for data sources are given in some questions.

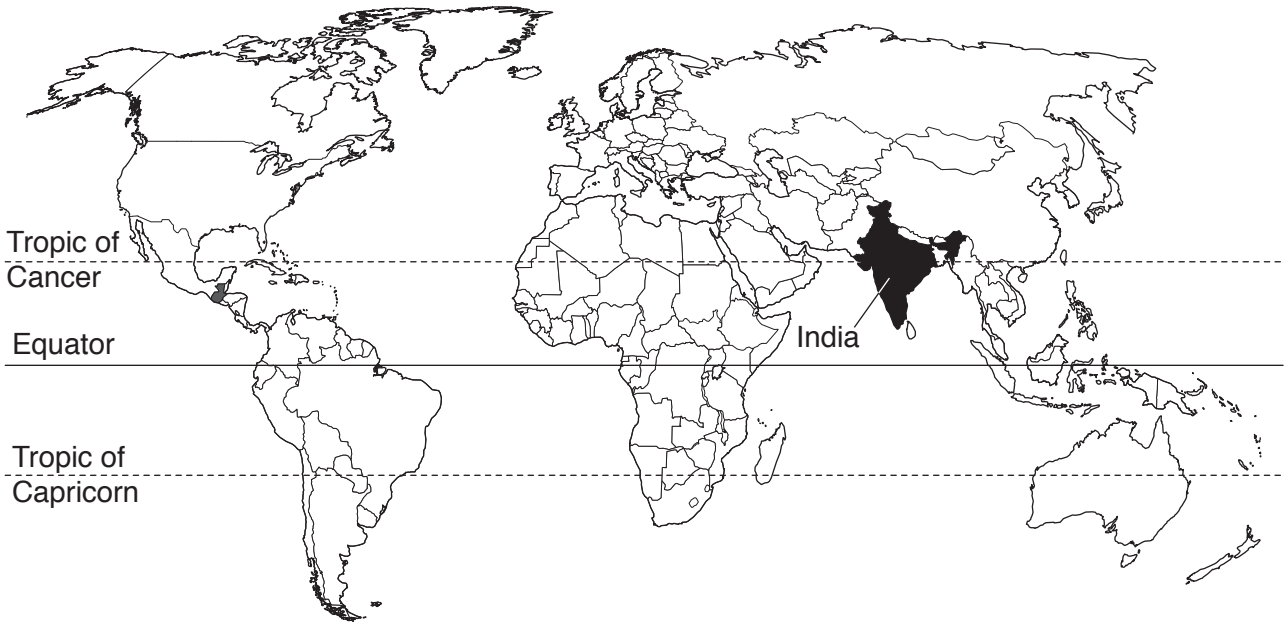
You may use the source data to draw diagrams and graphs or to do calculations to illustrate your answers.

At the end of the examination, fasten all your work securely together.

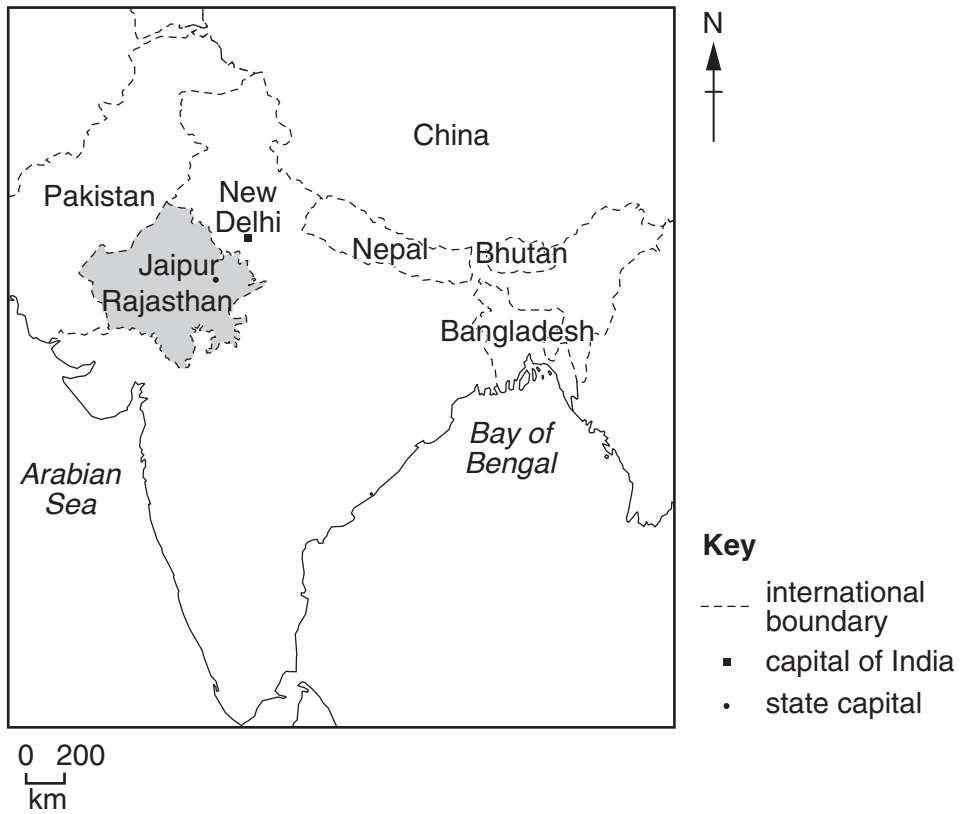
The number of marks is given in brackets [] at the end of each question or part question.

This document consists of **14** printed pages and **2** blank pages.

map of the world



map of India



area of India: 3.3 million km²

population: 1252 million

children per woman: 2.48

life expectancy: 68 years

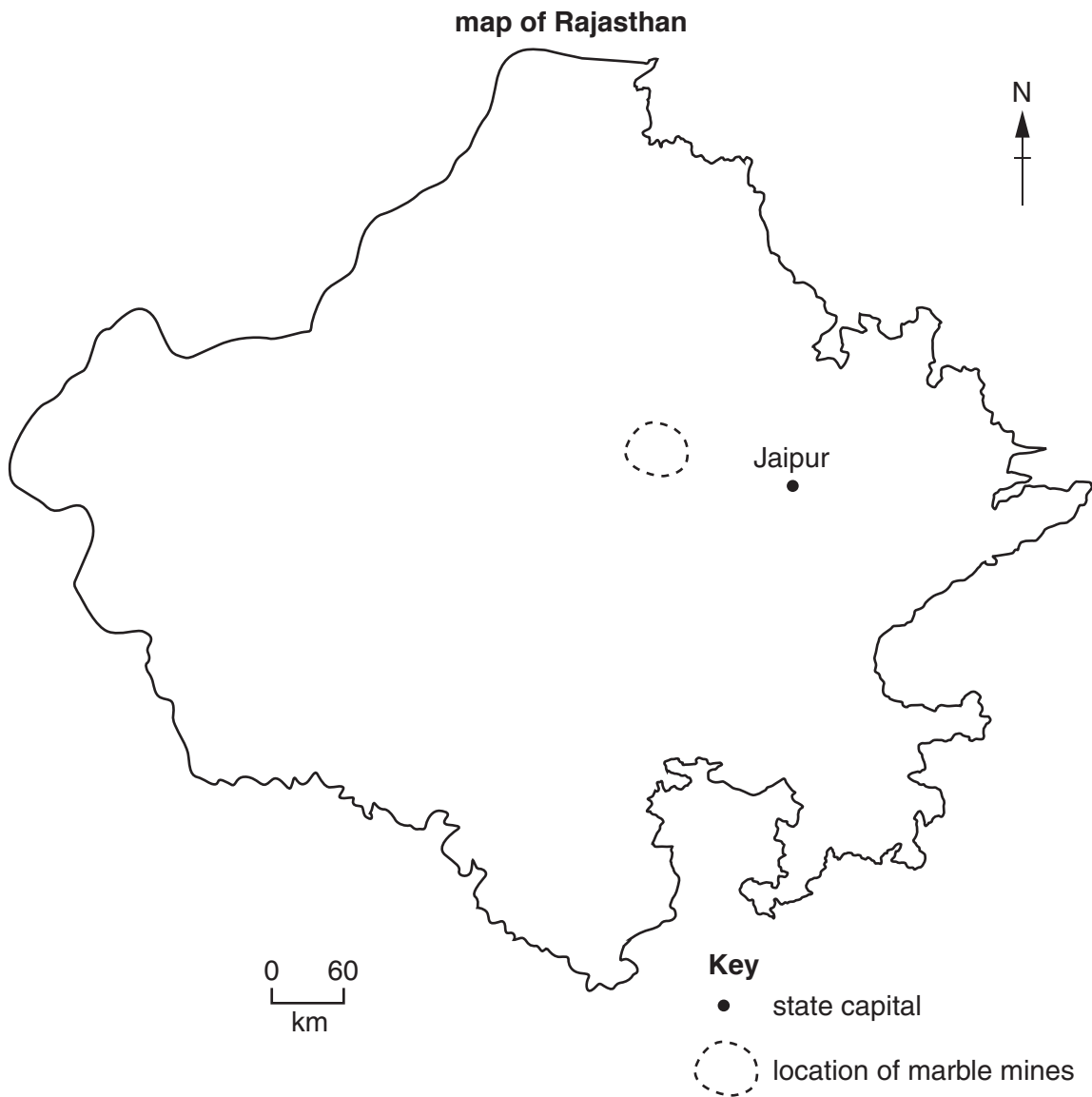
currency: Indian Rupee (60 INR = 1 USD)

languages: Hindi, many other languages

climate: tropical monsoon, arid in north west

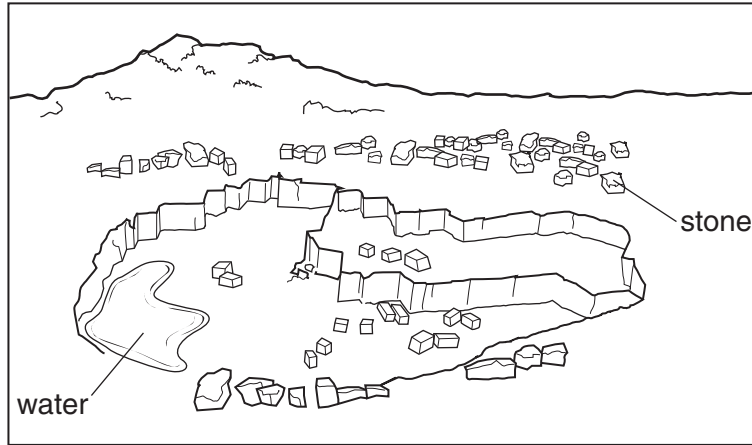
terrain: mountains in the north, Ganges valley, plateau in south

main exports: petroleum products, precious stones, machinery, iron and steel, chemicals, vehicles, clothing



1 Rajasthan has the largest area of any state in India and a population of 85 million.

Most of the population are farmers and live in small villages. Natural resources include marble, granite, sandstone, copper, zinc and oil. There are thousands of small quarries and mines from which stone is extracted. An example is shown in the diagram below.



(a) The eight largest cities in the state are shown in the table.

city	population / millions
Jaipur	3.1
Jodhpur	1.2
Kota	1.0
Bikaner	0.7
Ajmer	0.6
Bhilwara	0.4
Alwar	0.4
Bharatpur	0.3
total

(i) Complete the table. [1]

(ii) Calculate the percentage of the 85 million people of Rajasthan that live in these cities.

Space for working.

..... % [1]

(c) Read these quotes from two miners.

We work ten hours a day, six days a week. Our employer only gives us water to drink.

Many miners cannot continue working for more than a few years as their lungs become damaged. They are not paid compensation when they can no longer work.

(i) Suggest **three** other items employers should give to miners.

.....
.....
.....
.....[3]

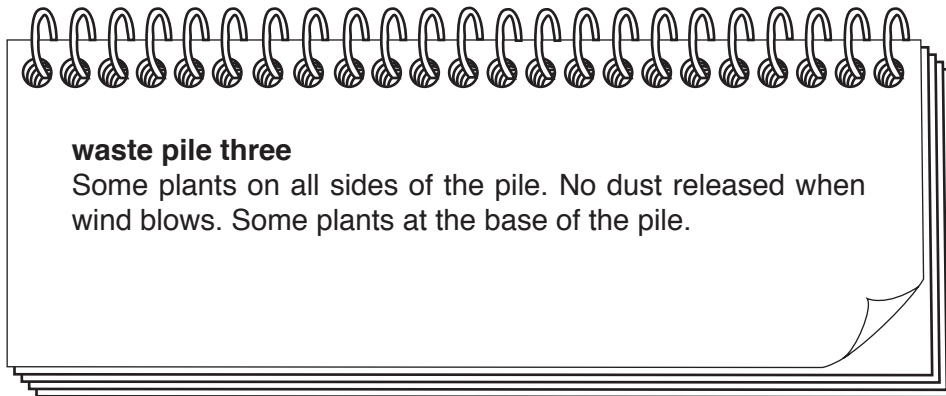
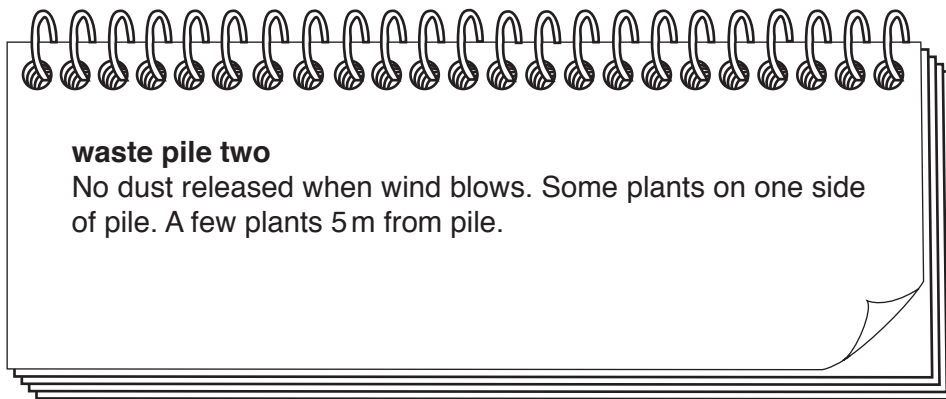
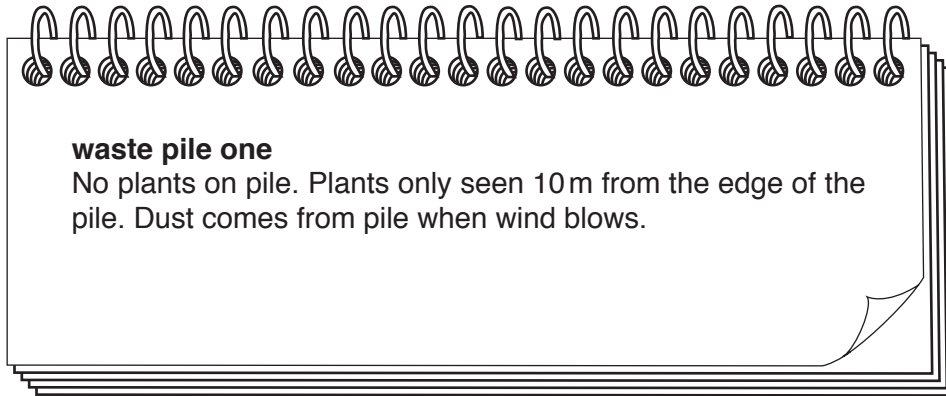
(ii) Suggest why the miners are **not** paid compensation.

.....
.....
.....
.....[2]

(d) Mines are abandoned when all the marble has been removed. Describe what can be done to restore the land when a mine reaches the end of its working life.

.....
.....
.....
.....
.....
.....
.....
.....
.....
.....[4]

(e) A student carried out a visual survey of three piles of waste from a marble mine.



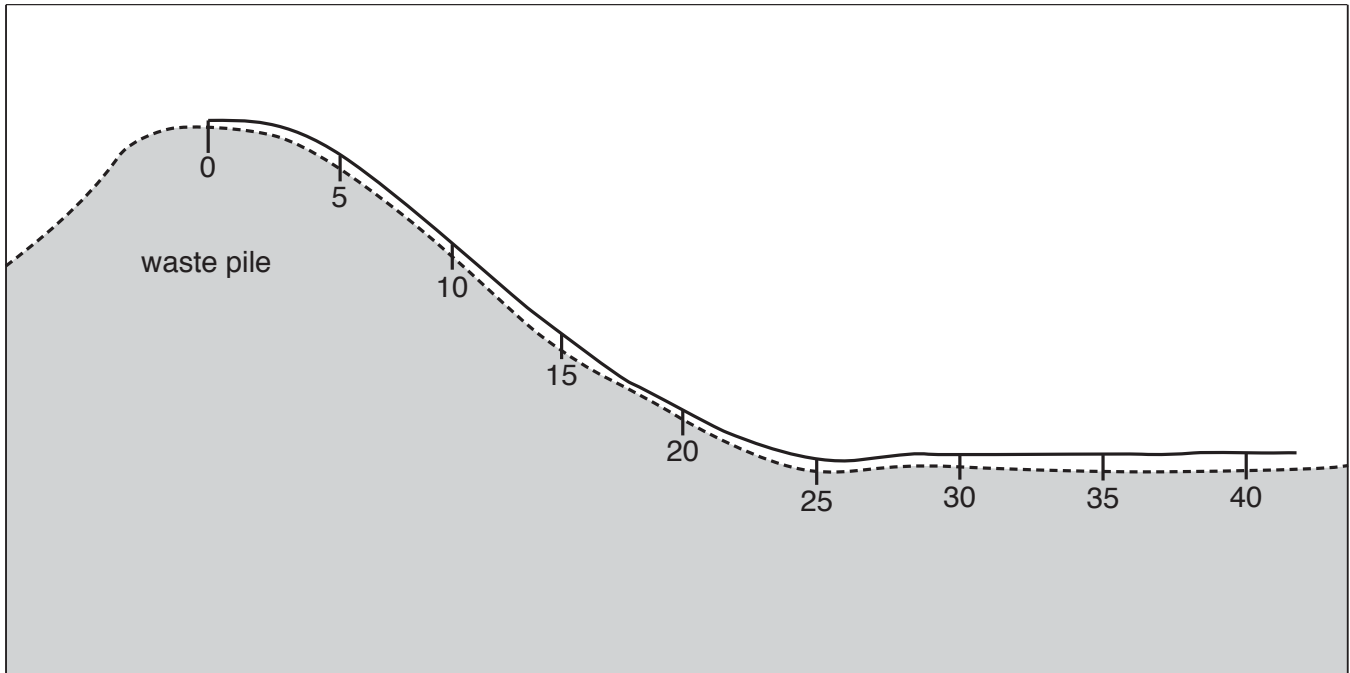
Using this information, state which is the newest and which is the oldest pile.

newest

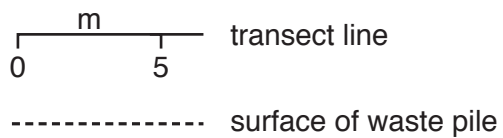
oldest

[2]

- (f) The student decided to carry out a more detailed survey to record the plants found along a transect starting at the top of a waste pile. They surveyed at 5 m intervals using a 0.25 m² quadrat. The student also measured pH and surface temperature at 5 m intervals.



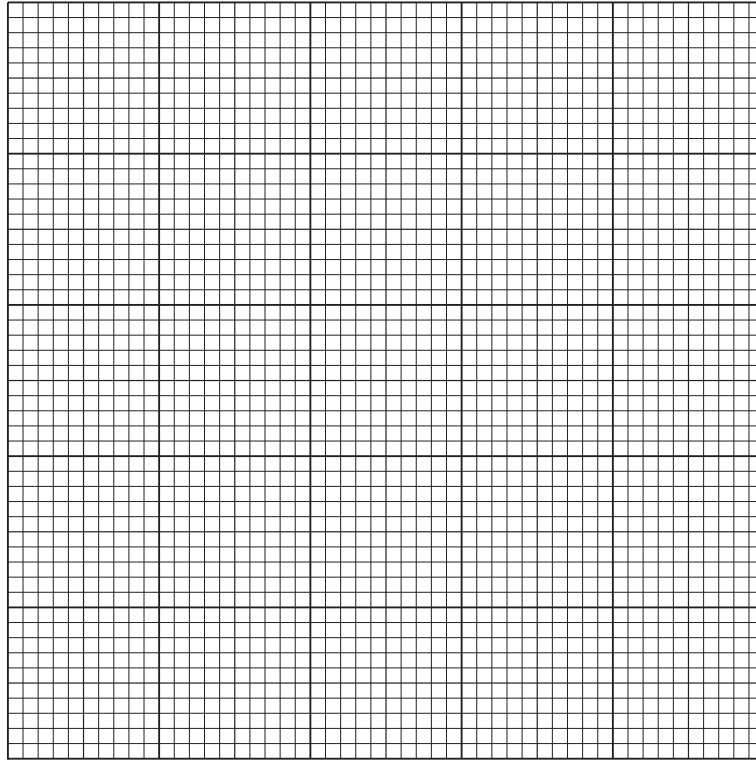
Key



The results are shown in the table.

distance from top of waste pile / m	0	5	10	15	20	25	30	35	40
number of plants	1	2	5	8	12	13	18	17	18
number of plant species	1	1	1	2	3	3	5	4	5
pH	8.7	8.6	8.5	8.2	7.7	7.4	7.2	7.2	7.2
surface temperature / °C	25	25	26	26	25	24	23	23	24

- (i) Plot a graph of the **number of plants** along the transect on the grid below. [4]



- (ii) Describe the trend shown by the graph.

.....
.....[1]

- (iii) The student decided that waste from the mine had an effect on the plants. Using information in the table, and your own knowledge, explain the findings of this survey.

.....
.....
.....
.....
.....
.....
.....
.....
.....
.....[4]

- (iv) Explain why these findings may **not** be representative of the problems caused by the marble mine waste in Rajasthan.

.....

 [2]

- (v) Describe **one** other investigation the student could carry out in a laboratory to find out how dust from these mines may affect wheat crops grown nearby.

.....

 [3]

- (g) About half the rock from marble mines becomes waste. When cutting and polishing machines are used, large amounts of marble powder mix with water to form slurry. This is pumped onto nearby land.

A machine has been made that can produce building blocks. The following raw materials can be used to make up to 750 000 blocks in one year.

raw material	mass/tonnes
cement	11
sand	32
slurry	272
total	315

- (i) Calculate the percentage by mass of slurry in each block.

Space for working.

..... % [2]

(ii) Suggest advantages to block-makers and mine owners of using this machine.

block-makers

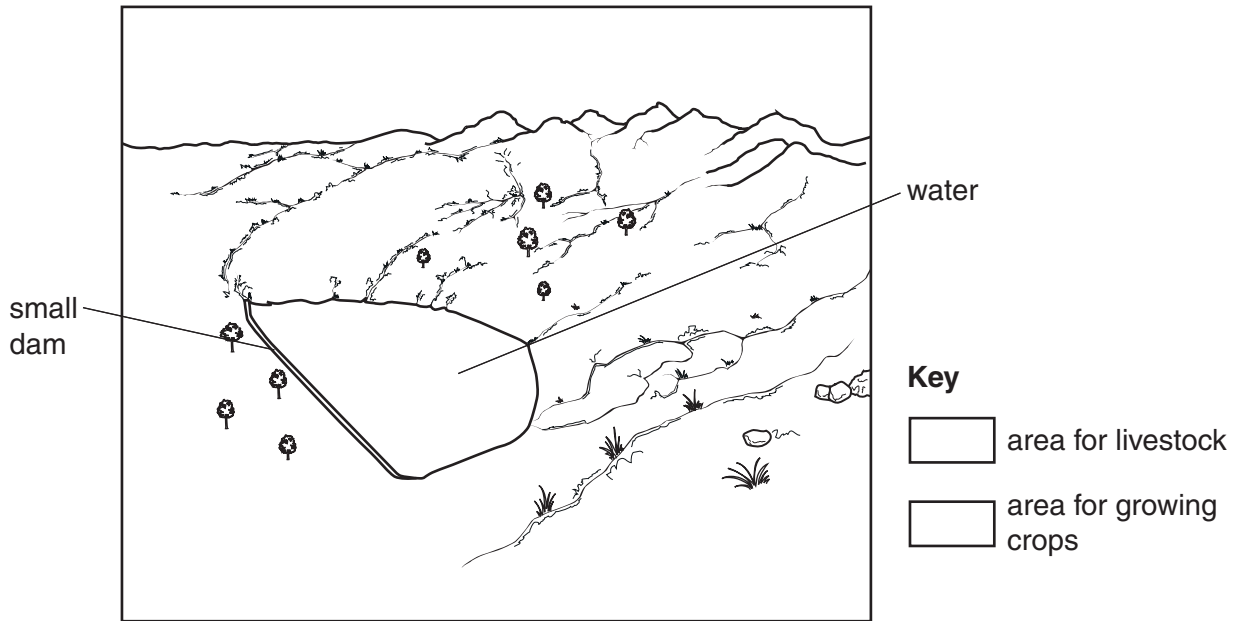
.....

mine owners

.....

[3]

- 2 (a) The annual rainfall across Rajasthan varies from 100 mm to 1000 mm. The average annual rainfall is 574 mm. Some parts of Rajasthan experience drought. Many villages have built a small dam to capture surface run-off. This water refills wells and aquifers. An example is shown below.



- (i) Shade in **one** area suitable for livestock and **one** area suitable for growing crops. Complete the key. [3]

- (ii) Explain your choices in part (i).

.....

.....

.....

..... [2]

- (iii) Describe how wells below the small dam can provide water during drought.

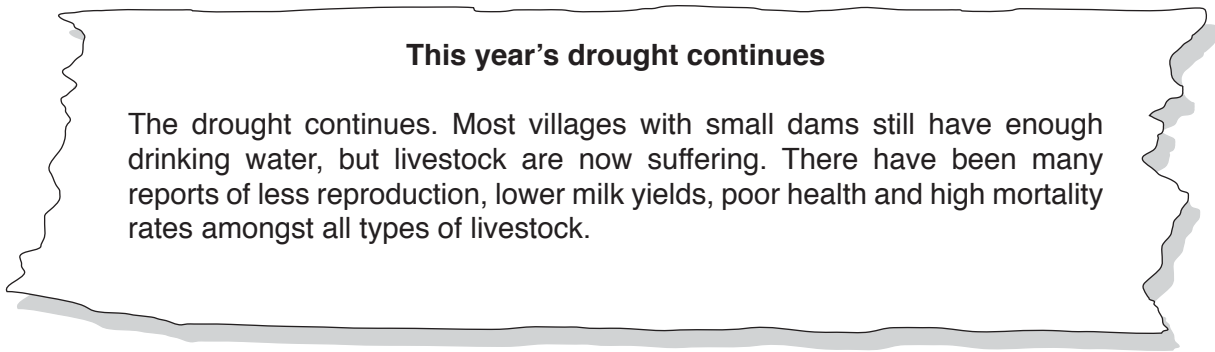
.....

.....

.....

..... [2]

(b) Read the newspaper report shown below.



Suggest reasons why the government is usually reluctant to declare a drought.

.....
.....
.....
.....
.....
..... [3]

(c) To find out how drought affects villages a survey of livestock is carried out regularly. A sample of villages in every district is surveyed.

(i) Describe how the villages could be sampled for this survey.

.....
..... [1]

(ii) A questionnaire is used to find out about the survival of village livestock and their productivity. Complete the questionnaire with **three** further questions. The first one has been done for you.

1. Which animals do you keep?

goats sheep chickens buffalo

2.
.....
3.
.....
4.
..... [4]

BLANK PAGE

Permission to reproduce items where third-party owned material protected by copyright is included has been sought and cleared where possible. Every reasonable effort has been made by the publisher (UCLES) to trace copyright holders, but if any items requiring clearance have unwittingly been included, the publisher will be pleased to make amends at the earliest possible opportunity.

To avoid the issue of disclosure of answer-related information to candidates, all copyright acknowledgements are reproduced online in the Cambridge International Examinations Copyright Acknowledgements Booklet. This is produced for each series of examinations and is freely available to download at www.cie.org.uk after the live examination series.

Cambridge International Examinations is part of the Cambridge Assessment Group. Cambridge Assessment is the brand name of University of Cambridge Local Examinations Syndicate (UCLES), which is itself a department of the University of Cambridge.