

UNIVERSITY OF CAMBRIDGE INTERNATIONAL EXAMINATIONS
General Certificate of Education
Advanced Subsidiary Level and Advanced Level

GEOGRAPHY

9696/03

Paper 3 Advanced Human Options

May/June 2006

INSERT

1 hour 30 minutes

READ THESE INSTRUCTIONS FIRST

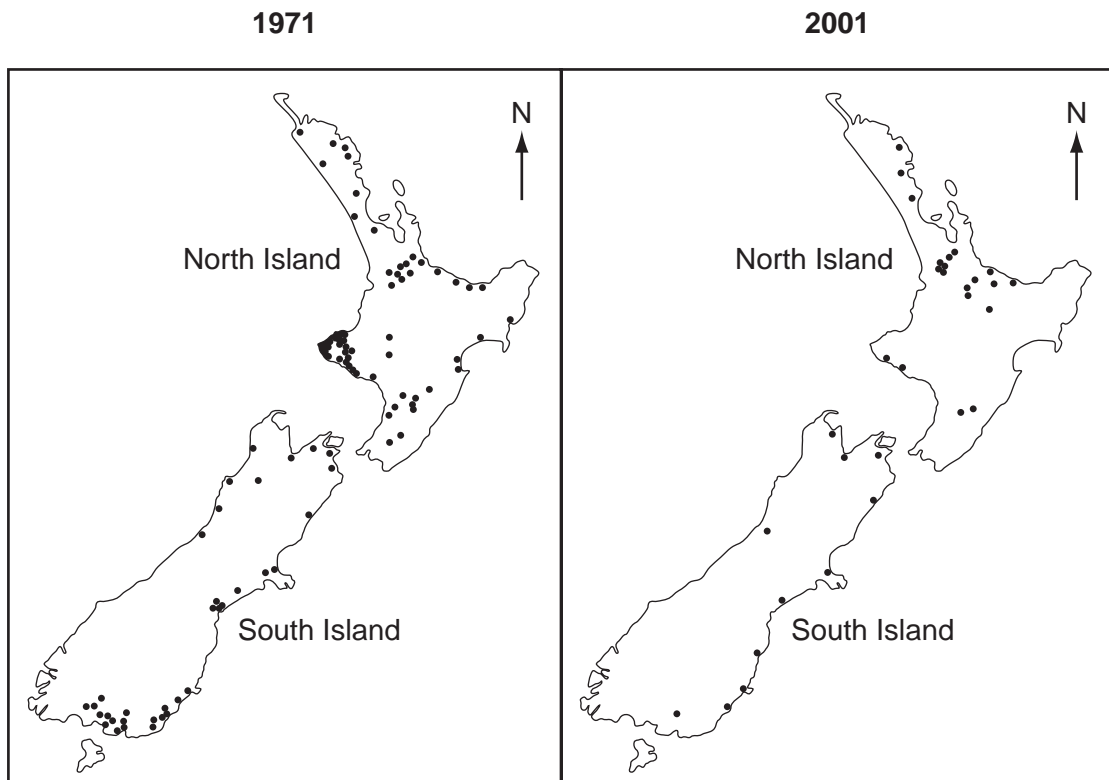
This insert contains all the Figures and Tables referred to in the questions.

This document consists of **6** printed pages and **2** blank pages.



Figs 1A and 1B and Table 1 for Question 1

Changes in the New Zealand dairy industry, 1971-2001

**KEY**

- dairy factory

Table 1

number of dairy factories	1971	2001	change
North Island	65	16	-49
South Island	42	10	-32
total for New Zealand	107	26	-81

Fig. 2 for Question 3

The path of the radiation cloud from Chernobyl, 1986

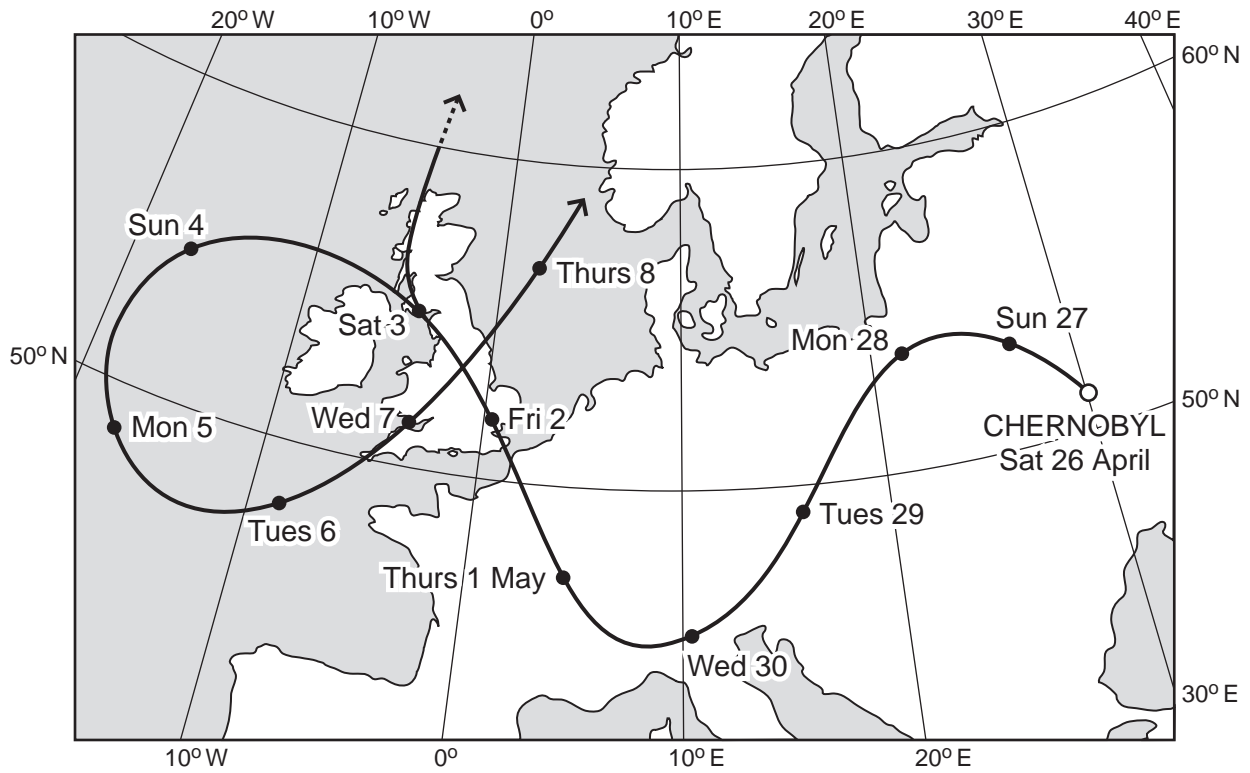


Fig. 3A for Question 5

Imports, exports and the balance of trade for Costa Rica, 1992-2003

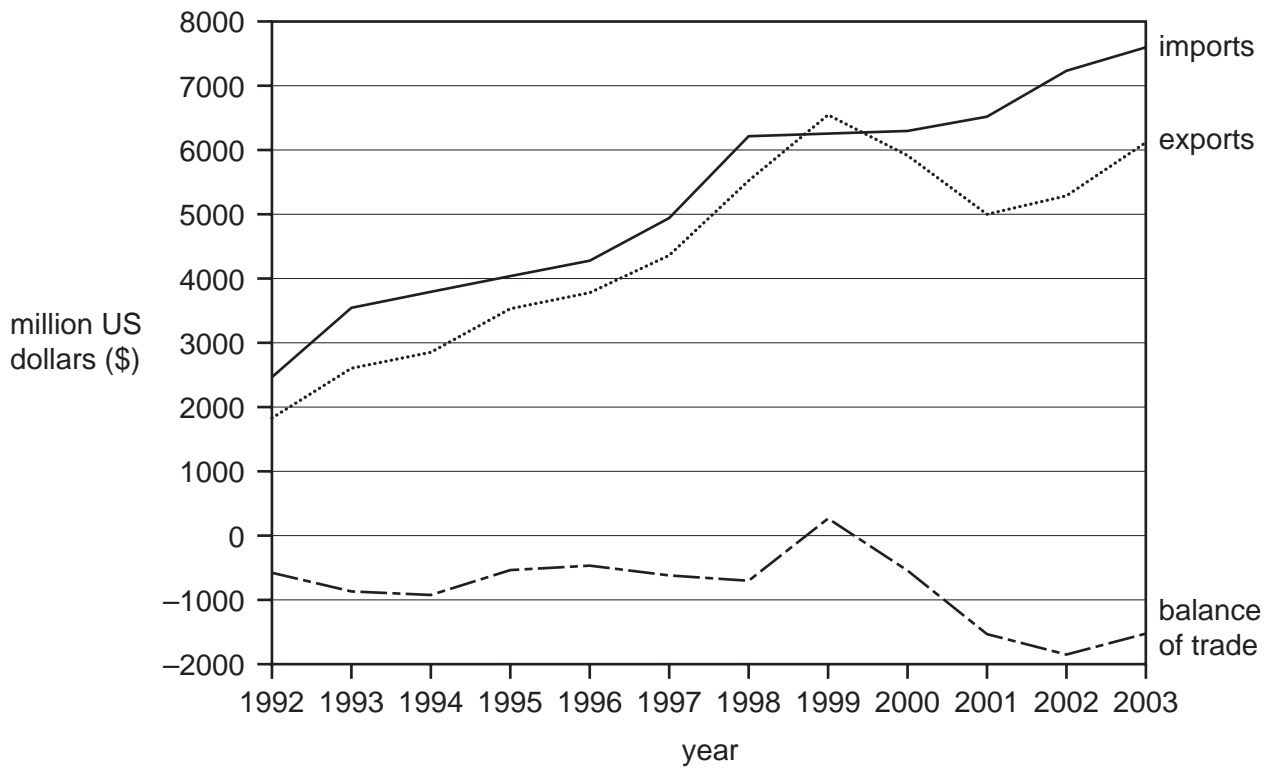


Fig. 3B for Question 5

The location of Costa Rica



BLANK PAGE

Figs 4A, 4B and 4C for Question 8

Spatial disparities in China's industrial development, 1991-2000

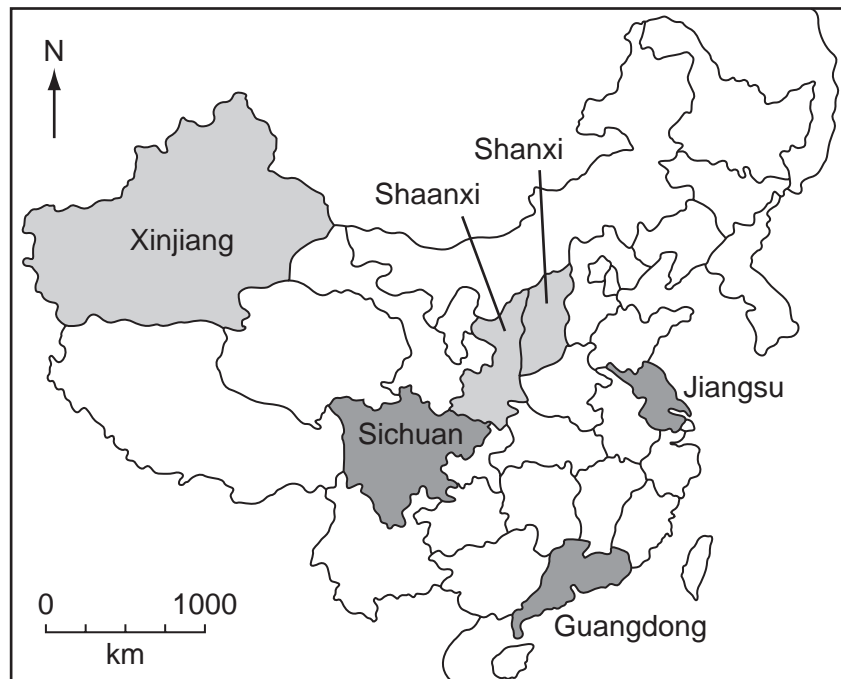


Fig. 4A

Using a measure of industrial structure (Si)

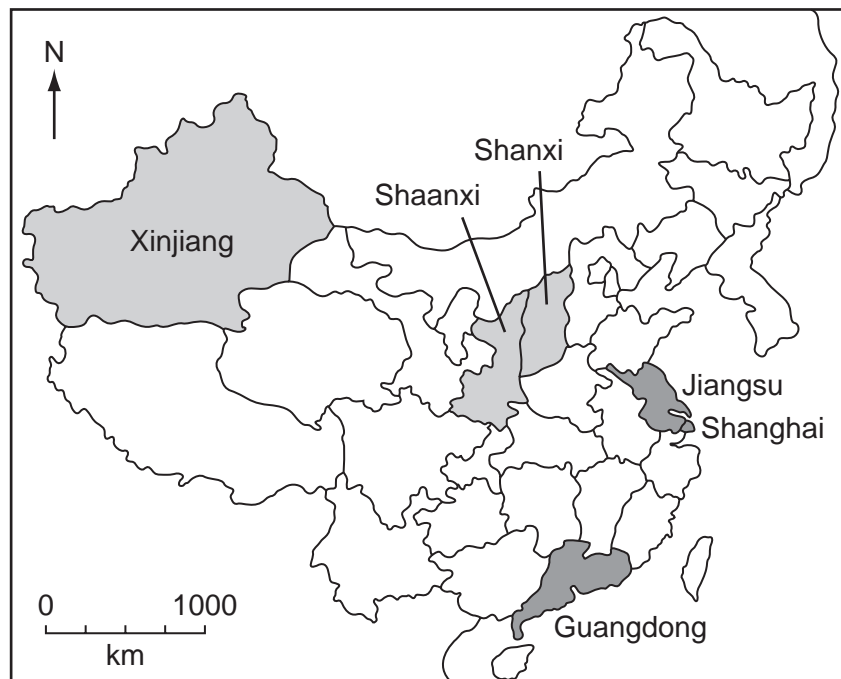
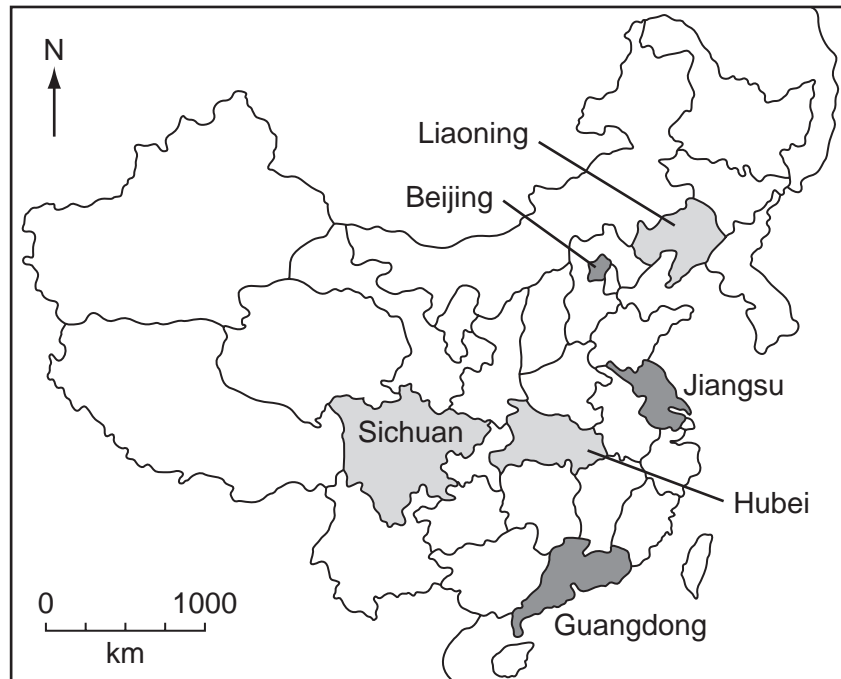


Fig. 4B

Using a measure of industrial growth (Gi)

**KEY**

■ top 3 provinces

■ bottom 3 provinces

Fig. 4C**Using a measure of industrial competitiveness (Ci)**

