



UNIVERSITY OF CAMBRIDGE INTERNATIONAL EXAMINATIONS  
General Certificate of Education Advanced Subsidiary Level and Advanced Level

---

**GEOGRAPHY**

**9696/31**

Paper 3 Advanced Human Options

**May/June 2010**

INSERT

**1 hour 30 minutes**

---

**READ THESE INSTRUCTIONS FIRST**

This Insert contains all the Figures and the Tables referred to in the questions.

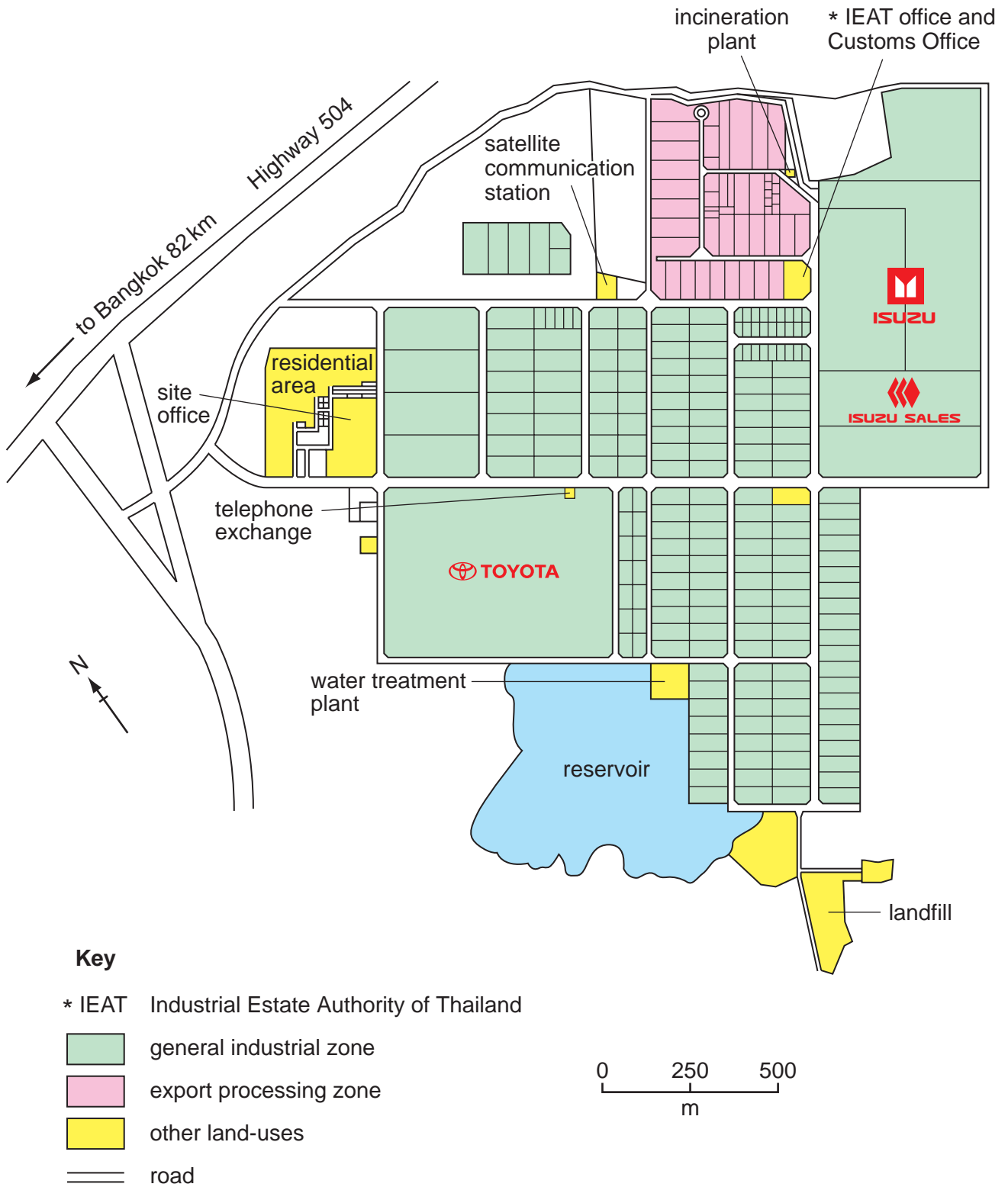
---

This document consists of **5** printed pages and **3** blank pages.



Fig. 1 for Question 2

Plan of the Gateway City Industrial Estate, Thailand, 2008



## Tables 1A and 1B for Question 4

## Changes in forest area, 2000–2005

country	world region	average annual change (thousand hectares/year)
Brazil	South America	–3103
Indonesia	Asia	–1871
Sudan	Africa	–589
Myanmar	Asia	–466
Zambia	Africa	–445
Tanzania	Africa	–412
Nigeria	Africa	–410
Dem. Rep. of Congo	Africa	–319
Zimbabwe	Africa	–313
Venezuela	South America	–288
<i>total</i>		–8216

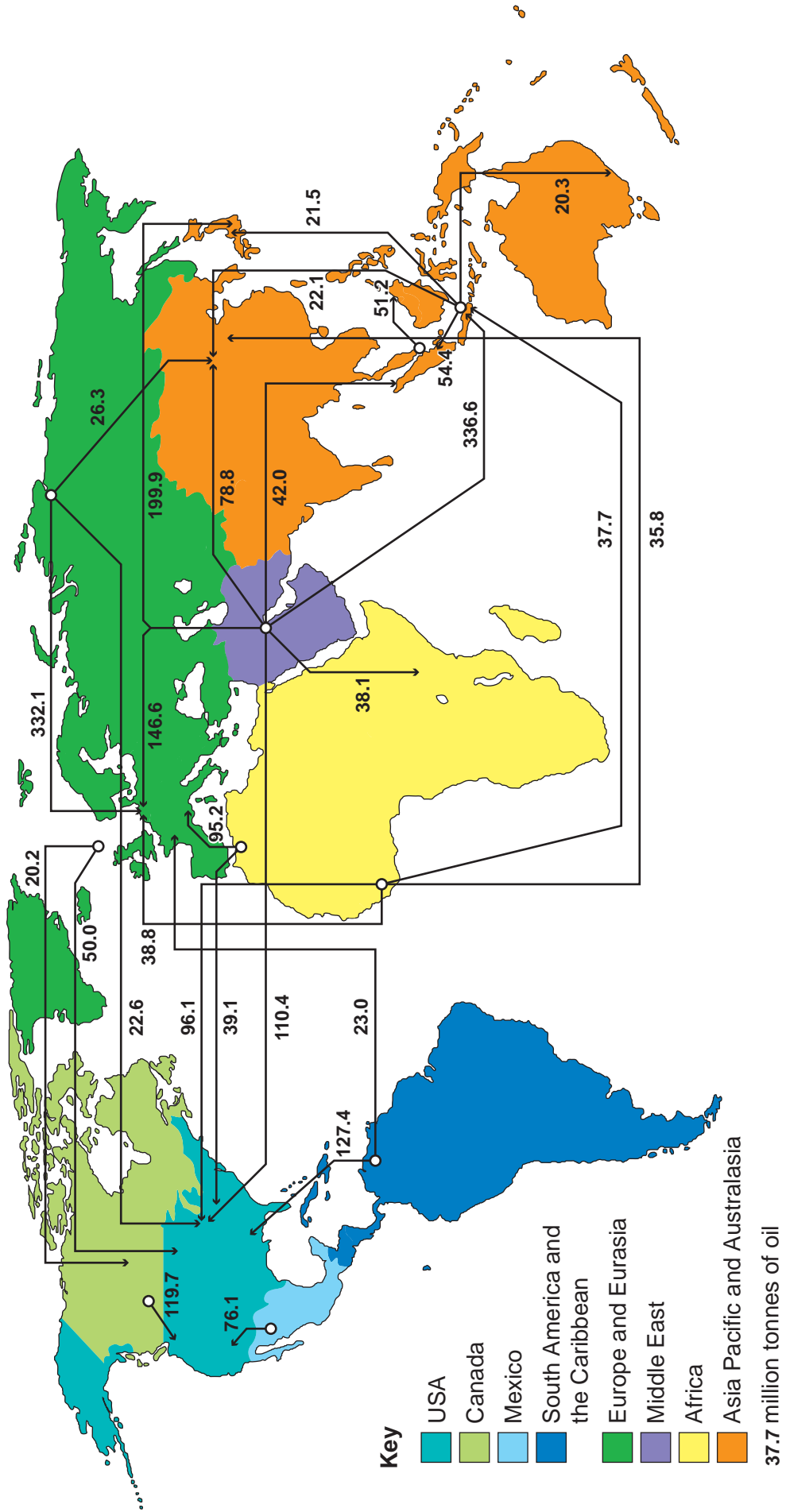
Table 1A The 10 countries with the largest average annual net losses in forest area

country	world region	average annual change (thousand hectares/year)
China	Asia	4058
Spain	Europe	296
Vietnam	Asia	241
USA	North America	159
Italy	Europe	106
Chile	South America	57
Cuba	Caribbean	56
Bulgaria	Europe	50
France	Europe	41
Portugal	Europe	40
<i>total</i>		5104

Table 1B The 10 countries with the largest average annual net gains in forest area

Fig. 2 for Question 5

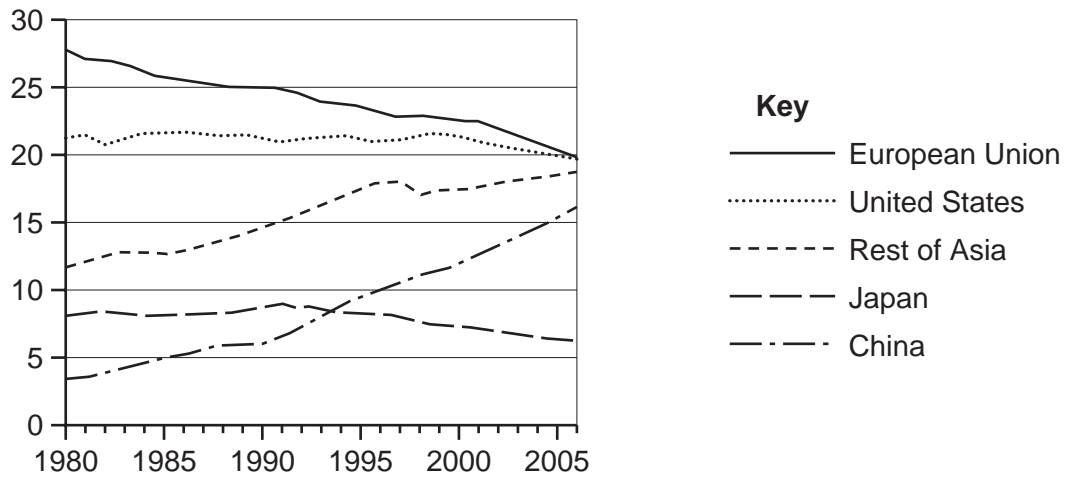
Major trade flows of oil\*, 2007



\* all flows of over 20 million tonnes in the year

Fig. 3 for Question 7

Percentage share of world GDP\*, for selected countries and world regions, 1980–2006



\* adjusted for purchasing power parity (PPP)





**BLANK PAGE**

---

Permission to reproduce items where third-party owned material protected by copyright is included has been sought and cleared where possible. Every reasonable effort has been made by the publisher (UCLES) to trace copyright holders, but if any items requiring clearance have unwittingly been included, the publisher will be pleased to make amends at the earliest possible opportunity.

University of Cambridge International Examinations is part of the Cambridge Assessment Group. Cambridge Assessment is the brand name of University of Cambridge Local Examinations Syndicate (UCLES), which is itself a department of the University of Cambridge.