



UNIVERSITY OF CAMBRIDGE INTERNATIONAL EXAMINATIONS  
General Certificate of Education Advanced Subsidiary Level and Advanced Level

---

**GEOGRAPHY**

**9696/31**

Paper 3 Advanced Human Options

**May/June 2013**

INSERT

**1 hour 30 minutes**

---

**READ THESE INSTRUCTIONS FIRST**

This Insert contains all the Figures referred to in the questions.

---

This document consists of **4** printed pages.



Figs 1A and 1B for Question 1

Irrigated area and fertiliser use, 1972–1998

Irrigated area

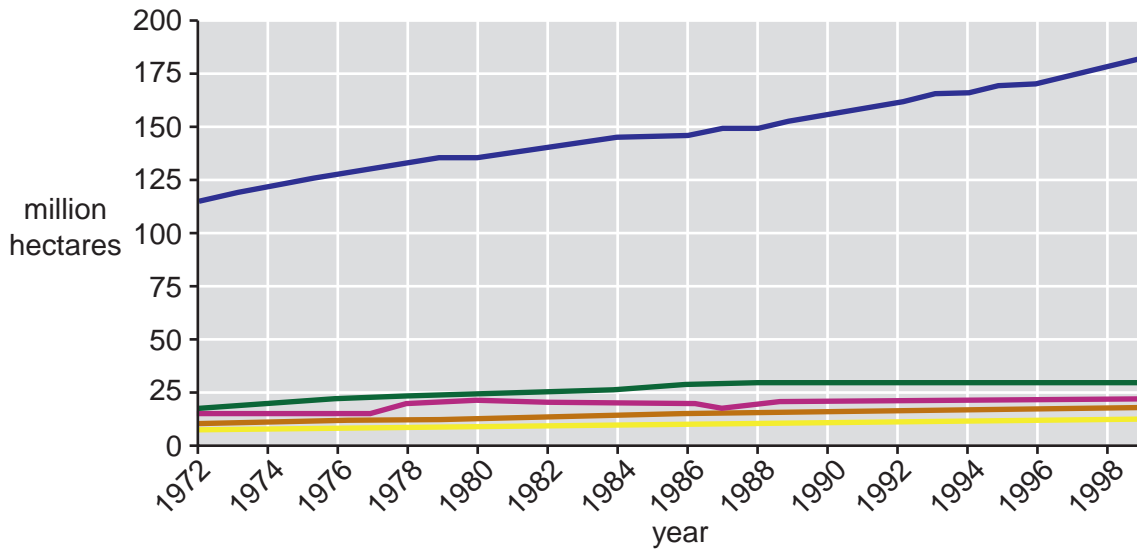
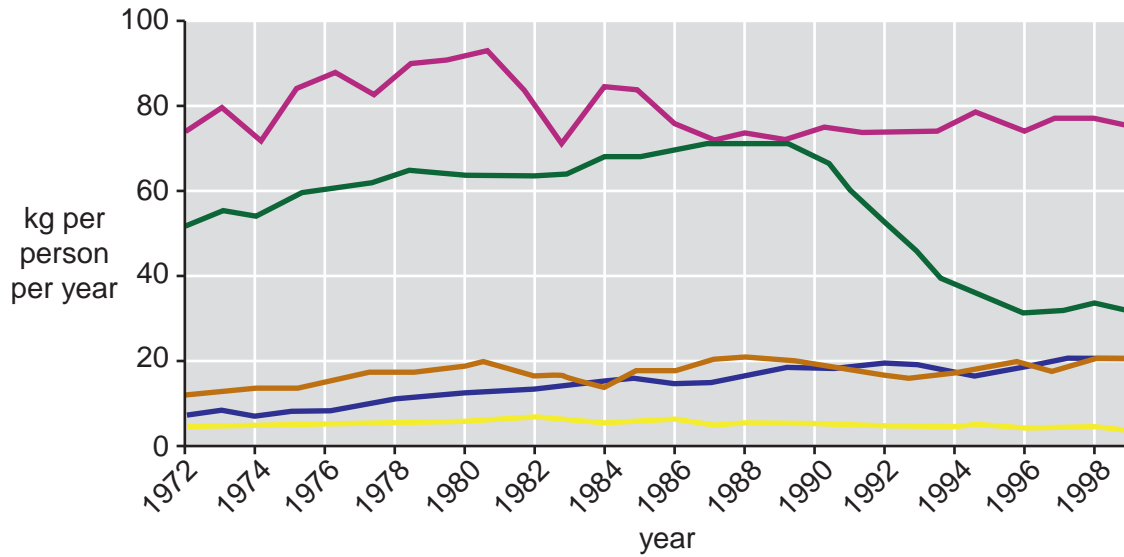


Fig. 1A

Fertiliser use



Key

- Africa
- Latin America and the Caribbean
- Europe
- Asia and the Pacific
- North America

Fig. 1B

## Figs 2A and 2B for Question 3

## Introduction to biofuels and biomass energy

Biofuels are an important source of energy, supplying 10.8% of the world's *total energy demand* in 2009.

Biomass is biological material derived from living or recently living organisms. Biomass for energy is often used to mean plant-based material but it can also include animal products. Biomass energy is the general term for such matter which can be used as biofuel. This includes wood and charcoal, energy crops, agricultural waste, food waste and human and domestic waste.

Fig. 2A

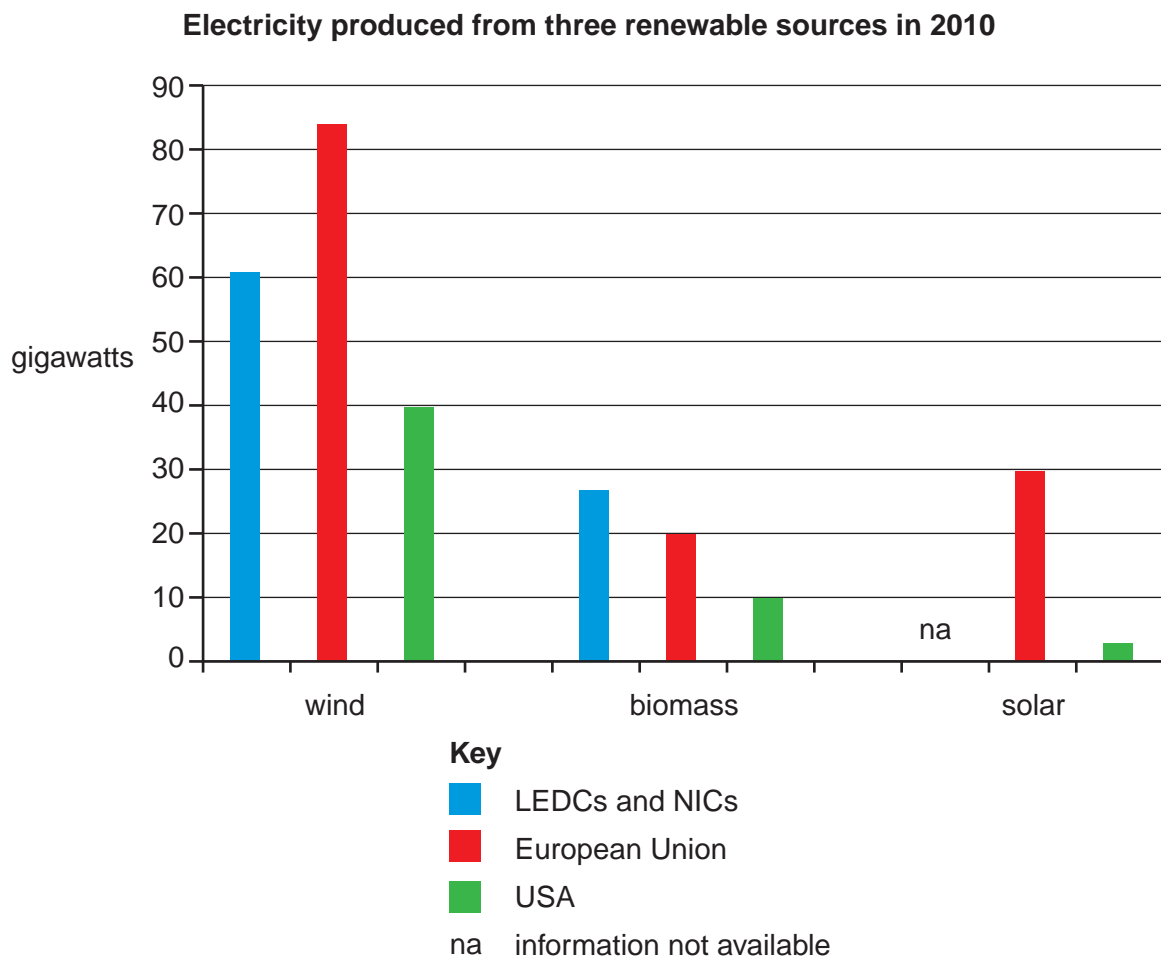


Fig. 2B

Permission to reproduce items where third-party owned material protected by copyright is included has been sought and cleared where possible. Every reasonable effort has been made by the publisher (UCLES) to trace copyright holders, but if any items requiring clearance have unwittingly been included, the publisher will be pleased to make amends at the earliest possible opportunity.

University of Cambridge International Examinations is part of the Cambridge Assessment Group. Cambridge Assessment is the brand name of University of Cambridge Local Examinations Syndicate (UCLES), which is itself a department of the University of Cambridge.

Fig. 3 for Question 5

Preferential tariffs applied by MEDCs on key products from the poorest countries, 1996–2008

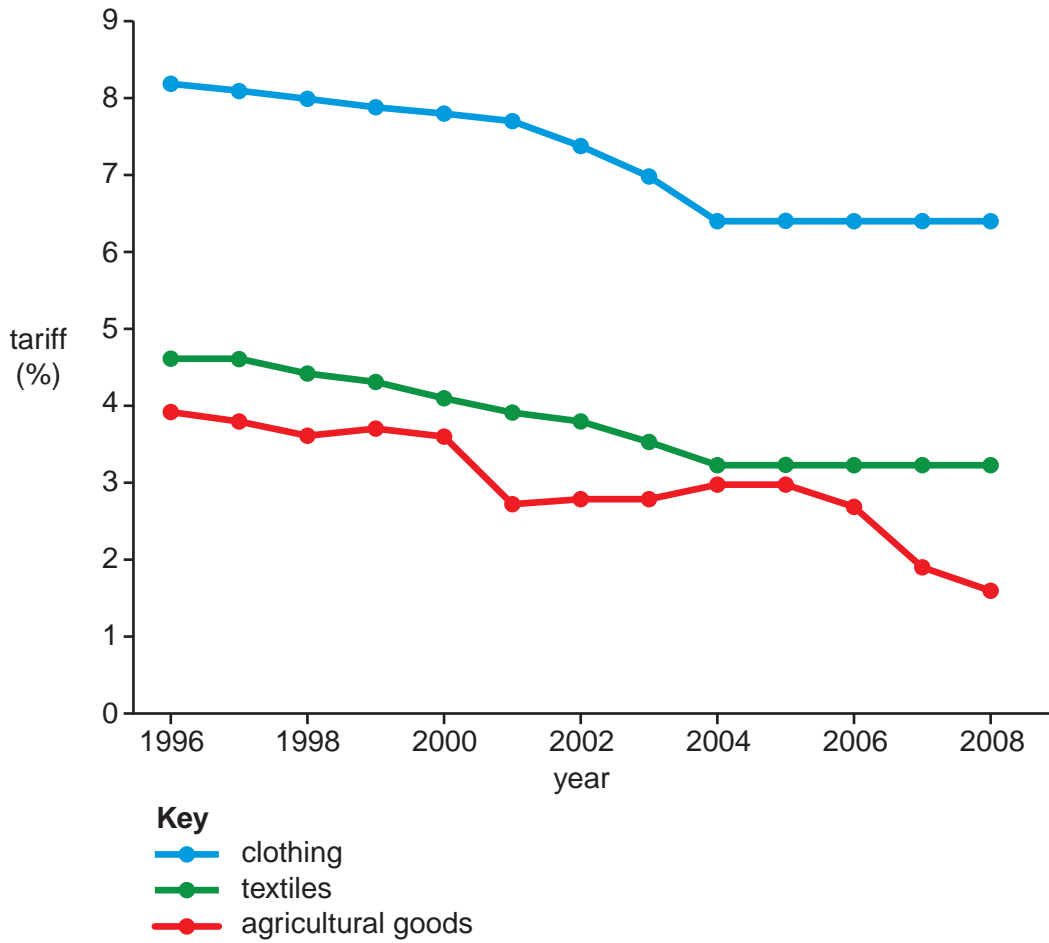


Table 1 for Question 7

GDP for the largest economies in 2009 and projected for 2050

| 2009 rank |         | GDP in billions | 2050 rank |           | Projected GDP in billions |
|-----------|---------|-----------------|-----------|-----------|---------------------------|
| 1         | USA     | \$14,256        | 1         | China     | \$59,475                  |
| 2         | China   | \$8,888         | 2         | India     | \$43,180                  |
| 3         | Japan   | \$4,138         | 3         | USA       | \$37,876                  |
| 4         | India   | \$3,752         | 4         | Brazil    | \$9,762                   |
| 5         | Germany | \$2,984         | 5         | Japan     | \$7,664                   |
| 6         | Russia  | \$2,687         | 6         | Russia    | \$7,559                   |
| 7         | UK      | \$2,257         | 7         | Mexico    | \$6,682                   |
| 8         | France  | \$2,172         | 8         | Indonesia | \$6,205                   |
| 9         | Brazil  | \$2,020         | 9         | Germany   | \$5,707                   |
| 10        | Italy   | \$1,922         | 10        | UK        | \$5,628                   |