
GEOGRAPHY

9696/21

Paper 2 Advanced Physical Options

October/November 2014

INSERT

1 hour 30 minutes

READ THESE INSTRUCTIONS FIRST

This Insert contains all the Figures and the Photograph referred to in the questions.



This document consists of **5** printed pages and **3** blank pages.

Fig. 1 for Question 2

Stages in the development of karst landforms in an area of tropical limestone

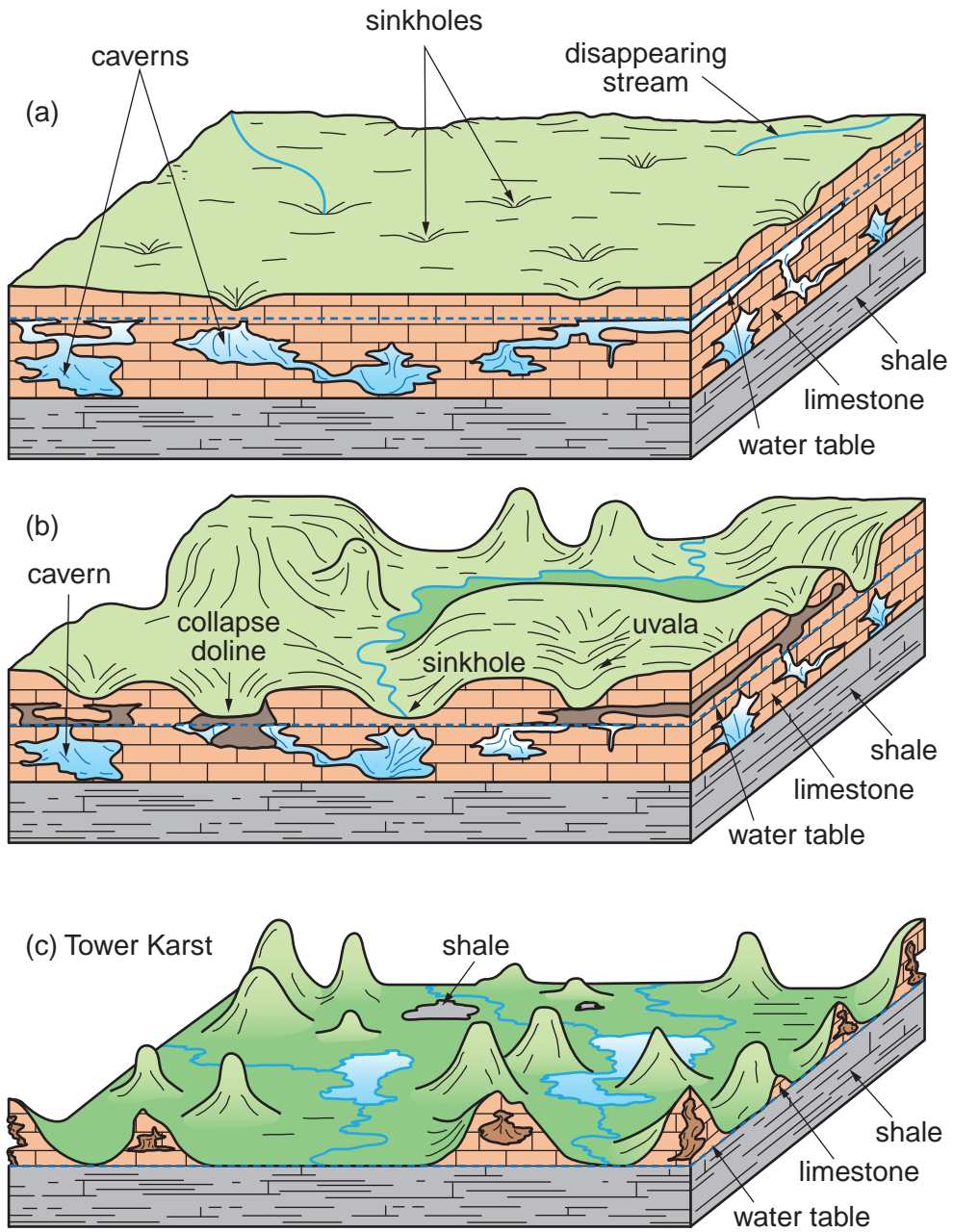


Fig. 2 for Question 4

Coastal sediment cell subject to shoreline management

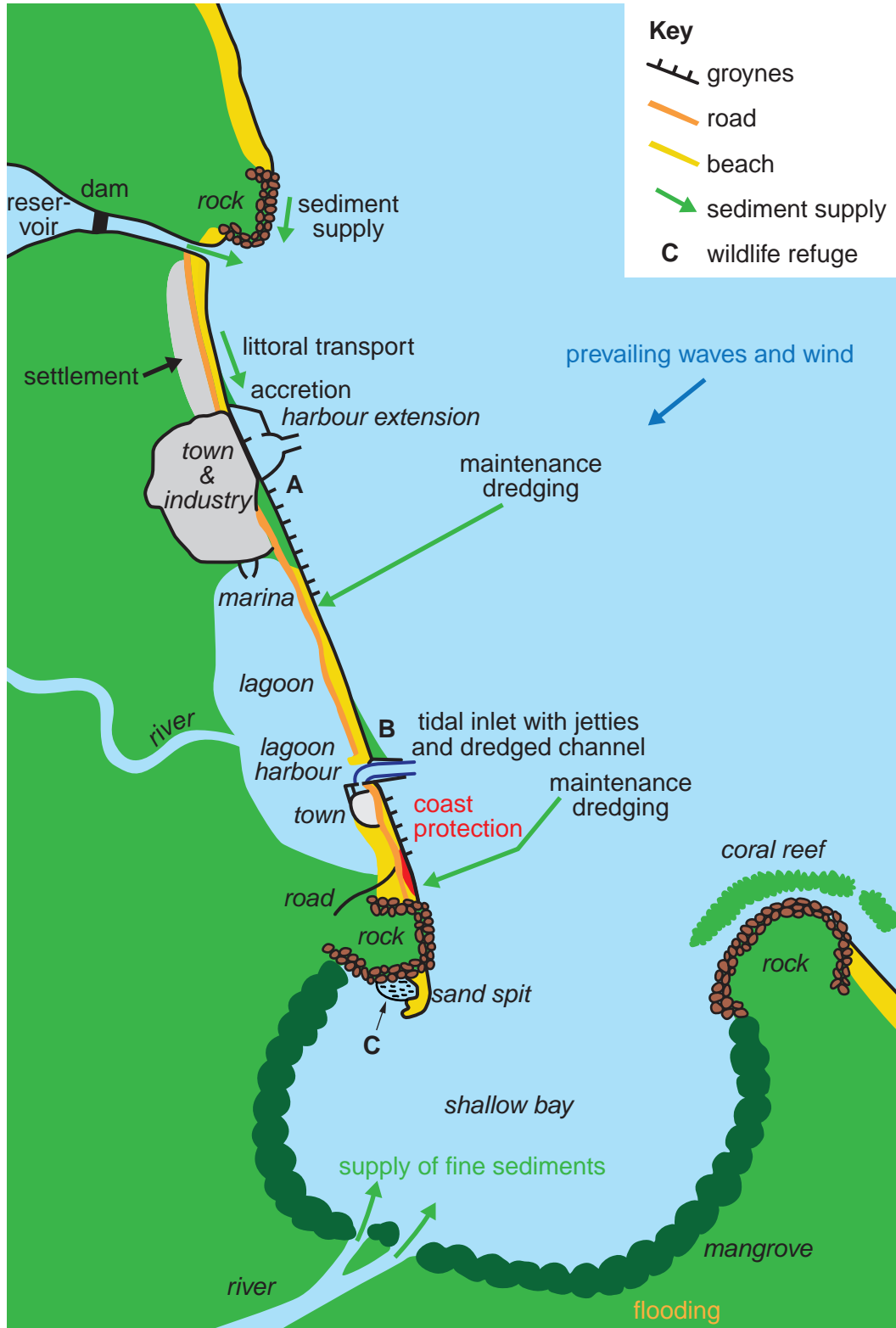
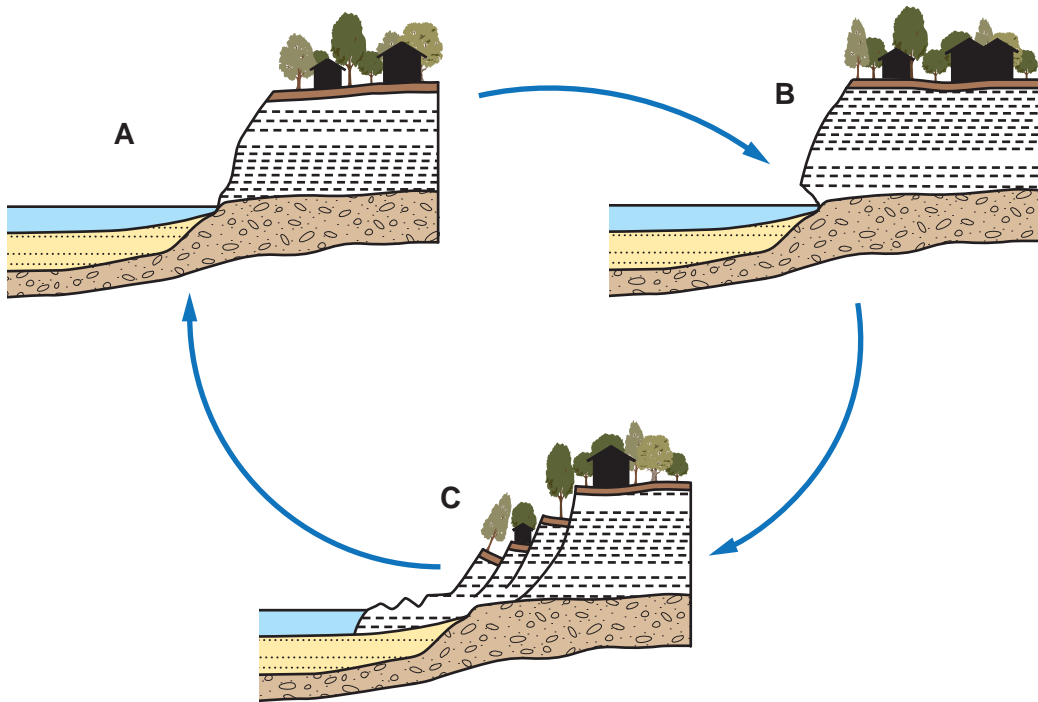


Fig. 3 for Question 5

The development of a landslide on a cliff or river bluff



Photograph A for Question 7

Vegetation in an area of a hot and dry climate



BLANK PAGE

Copyright Acknowledgements:

Question 2 Fig. 1 © http://go.owu.edu/~jbkrygie/krygier_html/geog_111/geog_111_lo/geog_111_takehome.html
Question 4 Fig. 2 © <http://www.townplanning.sabah.gov.my/iczr/Reports/Shoreline%20Management/mst21.jpg>
Question 5 Fig. 3 Adapted from: © <http://www.maine.gov/dacf/mgs/hazards/landslides/facts/landslide.htm>
Question 7 Photograph A © Jacques Jangoux 2007.

Permission to reproduce items where third-party owned material protected by copyright is included has been sought and cleared where possible. Every reasonable effort has been made by the publisher (UCLES) to trace copyright holders, but if any items requiring clearance have unwittingly been included, the publisher will be pleased to make amends at the earliest possible opportunity.

Cambridge International Examinations is part of the Cambridge Assessment Group. Cambridge Assessment is the brand name of University of Cambridge Local Examinations Syndicate (UCLES), which is itself a department of the University of Cambridge.