



UNIVERSITY OF CAMBRIDGE INTERNATIONAL EXAMINATIONS  
International General Certificate of Secondary Education

CANDIDATE  
NAME

CENTRE  
NUMBER

--	--	--	--	--

CANDIDATE  
NUMBER

--	--	--	--

\* 5 4 0 3 6 0 1 1 4 9 \*

**CAMBRIDGE INTERNATIONAL MATHEMATICS**

**0607/11**

Paper 1 (Core)

**May/June 2011**

**45 minutes**

Candidates answer on the Question Paper

Additional Materials: Geometrical Instruments

**READ THESE INSTRUCTIONS FIRST**

Write your Centre number, candidate number and name on all the work you hand in.

Write in dark blue or black pen.

Do not use staples, paper clips, highlighters, glue or correction fluid.

You may use a pencil for any diagrams or graphs.

**DO NOT WRITE IN ANY BARCODES.**

Answer **all** the questions.

**CALCULATORS MUST NOT BE USED IN THIS PAPER.**

All answers should be given in their simplest form.

You must show all the relevant working to gain full marks and you will be given marks for correct methods even if your answer is incorrect.

The number of marks is given in brackets [ ] at the end of each question or part question.

The total number of marks for this paper is 40.

**For Examiner's Use**

--

This document consists of **8** printed pages.



**Formula List**

Area,  $A$ , of triangle, base  $b$ , height  $h$ .  $A = \frac{1}{2}bh$

Area,  $A$ , of circle, radius  $r$ .  $A = \pi r^2$

Circumference,  $C$ , of circle, radius  $r$ .  $C = 2\pi r$

Curved surface area,  $A$ , of cylinder of radius  $r$ , height  $h$ .  $A = 2\pi rh$

Curved surface area,  $A$ , of cone of radius  $r$ , sloping edge  $l$ .  $A = \pi rl$

Curved surface area,  $A$ , of sphere of radius  $r$ .  $A = 4\pi r^2$

Volume,  $V$ , of prism, cross-sectional area  $A$ , length  $l$ .  $V = Al$

Volume,  $V$ , of pyramid, base area  $A$ , height  $h$ .  $V = \frac{1}{3}Ah$

Volume,  $V$ , of cylinder of radius  $r$ , height  $h$ .  $V = \pi r^2 h$

Volume,  $V$ , of cone of radius  $r$ , height  $h$ .  $V = \frac{1}{3}\pi r^2 h$

Volume,  $V$ , of sphere of radius  $r$ .  $V = \frac{4}{3}\pi r^3$

Answer **all** the questions.

For  
Examiner's  
Use

- 1 (a) Write 6.149 correct to 1 decimal place.

Answer(a) ..... [1]

- (b) Write 206 correct to 2 significant figures.

Answer(b) ..... [1]

- (c) Write 0.0023 in standard form.

Answer(c) ..... [1]

---

- 2 (a) List all four factors of 15.

Answer(a) ..... , ..... , ..... , ..... [1]

- (b) Find the highest common factor of 15 and 21.

Answer(b) ..... [2]

---

- 3 (a) Write down the number of lines of symmetry of a regular pentagon.

Answer(a) ..... [1]

- (b) A quadrilateral has rotational symmetry of **order** 2 and **no** lines of symmetry.

Write down the mathematical name of this quadrilateral.

Answer(b) ..... [1]

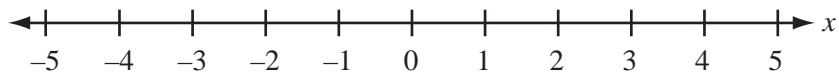
---

- 4 (a) Solve the equation  $2(3x - 5) = x + 10$ .

Answer(a)  $x =$  ..... [3]

- (b)  $-3 \leq x < 4$

Show this inequality on the number line below.



[2]

- 5 The  $n$ th term of a sequence is  $2n - 3$ .

- (a) Write down the first term and the second term of this sequence.

Answer(a) ..... , ..... [2]

- (b) Write down the 100th term of this sequence.

Answer(b) ..... [1]

- (c) Paulo says that the number 44 is in the sequence.

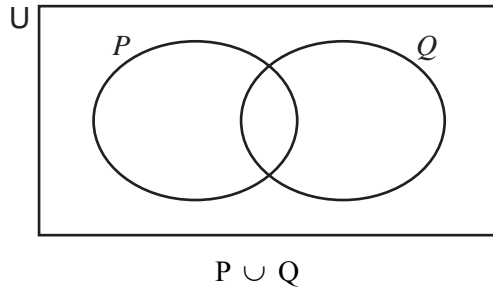
Is he correct?

You **must** show your working.

[2]

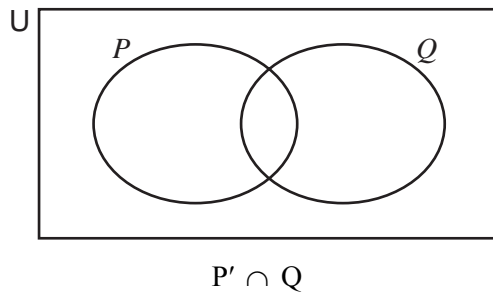
6 Shade the required regions in the Venn diagrams below.

(a)



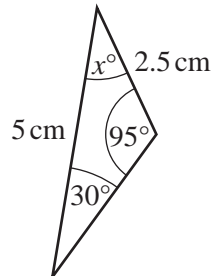
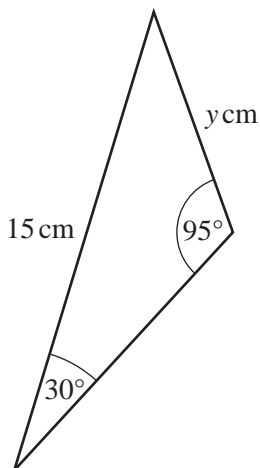
[1]

(b)



[1]

7



NOT TO  
SCALE

The diagram shows two triangles.

(a) Write down the value of  $x$ .

Answer(a)  $x =$  .....

[1]

(b) Complete the following statement.

The two triangles are .....

[1]

(c) Find the value of  $y$ .

Answer(c)  $y =$  .....

[2]

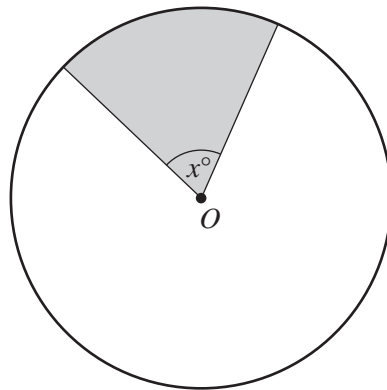
- 8 (a) Find the gradient of the line  $2y = x + 3$ .

Answer(a) ..... [2]

- (b) Write down the gradient of a line parallel to the line  $2y = x + 3$ .

Answer(b) ..... [1]

9



NOT TO  
SCALE

The area of the circle, centre  $O$ , is  $100 \text{ cm}^2$ .  
The area of the shaded sector is  $20 \text{ cm}^2$ .

Find the value of  $x$ .

Answer  $x =$  ..... [2]

10 (a) Work out  $\sqrt[3]{27}$ .

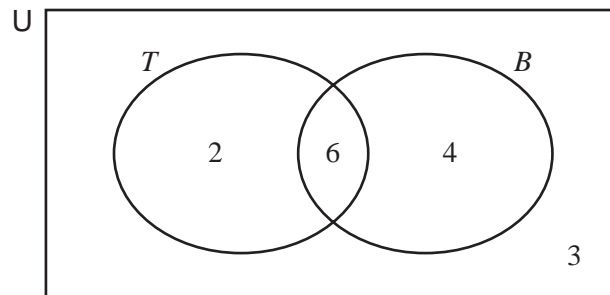
Answer(a) ..... [1]

(b) Factorise completely.

$$3y^2 - 15y$$

Answer(b) ..... [2]

11



The Venn diagram shows the number of students who play tennis ( $T$ ), basketball ( $B$ ), both tennis and basketball or neither of these games.

(a) How many students play basketball only?

Answer(a) ..... [1]

(b) How many students do not play tennis?

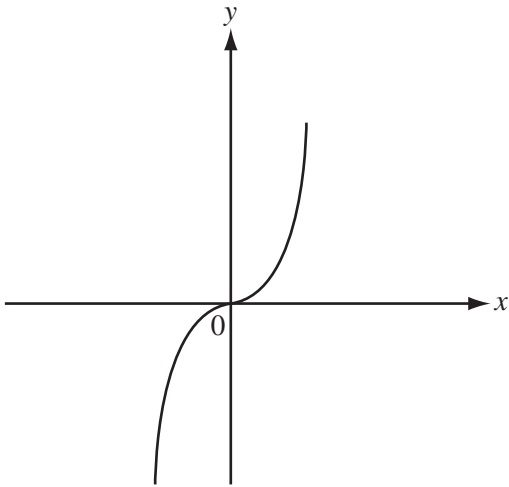
Answer(b) ..... [1]

(c) Find the probability that a student chosen at random plays tennis.

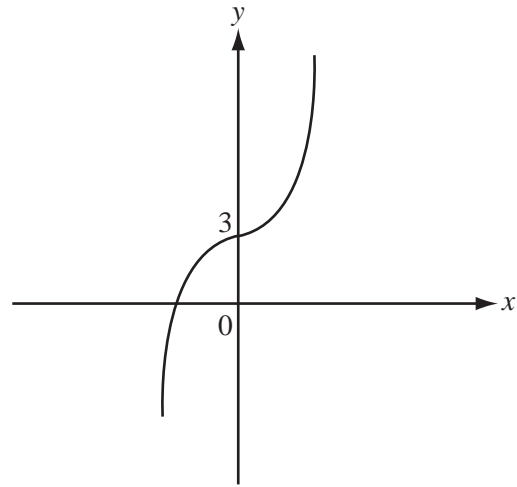
Answer(c) ..... [2]

- 12 (a) Graph **B** is a transformation of graph **A**. The equation of graph **A** is  $y = x^3$ .

Write down the equation of graph **B**.



A

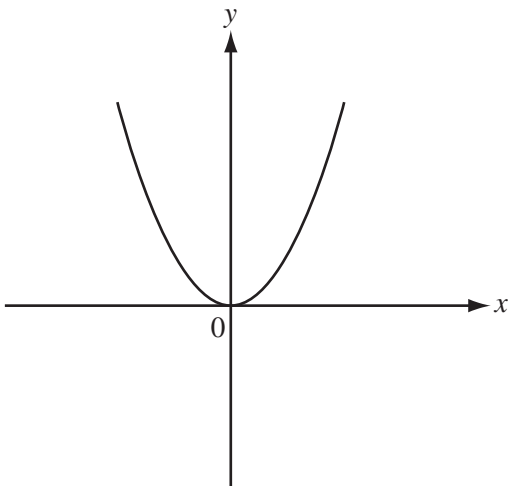


B

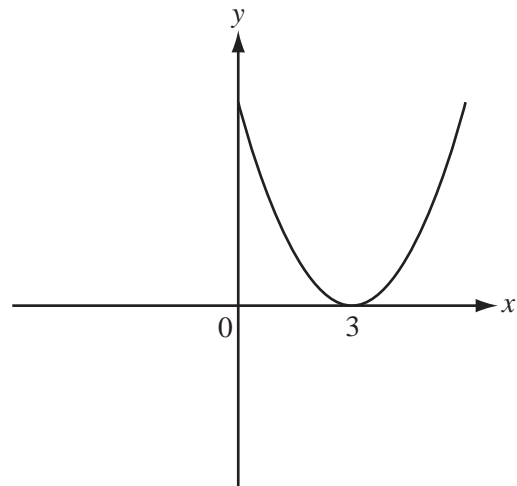
Answer(a) ..... [2]

- (b) Graph **D** is a transformation of graph **C**. The equation of graph **C** is  $y = x^2$ .

Write down the equation of graph **D**.



C



D

Answer(b) ..... [2]

Permission to reproduce items where third-party owned material protected by copyright is included has been sought and cleared where possible. Every reasonable effort has been made by the publisher (UCLES) to trace copyright holders, but if any items requiring clearance have unwittingly been included, the publisher will be pleased to make amends at the earliest possible opportunity.

University of Cambridge International Examinations is part of the Cambridge Assessment Group. Cambridge Assessment is the brand name of University of Cambridge Local Examinations Syndicate (UCLES), which is itself a department of the University of Cambridge.