

Centre Number	Candidate Number	Name
---------------	------------------	------

CAMBRIDGE INTERNATIONAL EXAMINATIONS
International General Certificate of Secondary Education

CO-ORDINATED SCIENCES

0654/02

Paper 2

May/June 2003

2 hours

Candidates answer on the Question Paper.
No Additional Materials are required.

READ THESE INSTRUCTIONS FIRST

Write your Centre number, candidate number and name on all the work you hand in.
Write in dark blue or black pen in the spaces provided on the Question Paper.
You may use a soft pencil for any diagrams, graphs, tables or rough working.
Do not use staples, paper clips, highlighters, glue or correction fluid.

Answer **all** questions.
At the end of the examination, fasten all your work securely together.
The number of marks is given in brackets [] at the end of each question or part question.
A copy of the Periodic Table is printed on page 24.

For Examiner's Use	
1	
2	
3	
4	
5	
6	
7	
8	
9	
10	
11	
12	
Total	

If you have been given a label, look at the details. If any details are incorrect or missing, please fill in your correct details in the space given at the top of this page.

Stick your personal label here, if provided.

This document consists of **22** printed pages and **2** blank pages.

1 Fig. 1.1 shows a white blood cell.

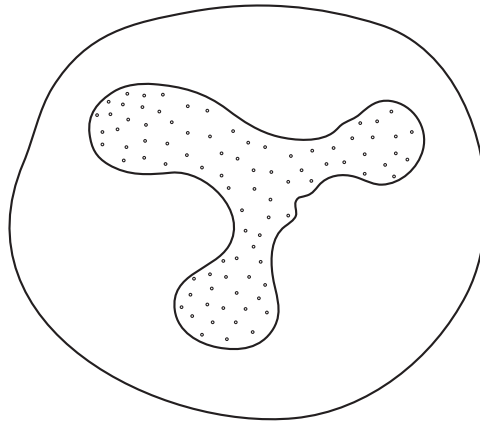


Fig. 1.1

(a) (i) Describe two ways in which the structure of a red blood cell differs from the structure of a white blood cell.

- 1. [2]
- 2. [2]

(ii) Describe two ways in which the structure of a plant cell from a leaf differs from the structure of the white blood cell shown in Fig. 1.1.

- 1. [2]
- 2. [2]

(b) State the function of white blood cells.
..... [1]

(c) In the disease AIDS, white blood cells are infected by a virus.
(i) Give the name of the virus which causes AIDS.
..... [1]

(ii) State two ways in which this virus can be transmitted.
1. [2]
2. [2]

2 Explain the following in terms of particles and their movement.

(a) A puddle of water evaporates more quickly on a warm day than on a cool day.

.....
.....
.....
.....
..... [3]

(b) When a solid is heated it expands.

.....
.....
.....
.....
..... [3]

(c) A metal bar conducts heat.

.....
.....
.....
..... [2]

- 3 (a) Fig. 3.1 shows the structure of four substances, **A**, **B**, **C** and **D**, which contain carbon atoms.

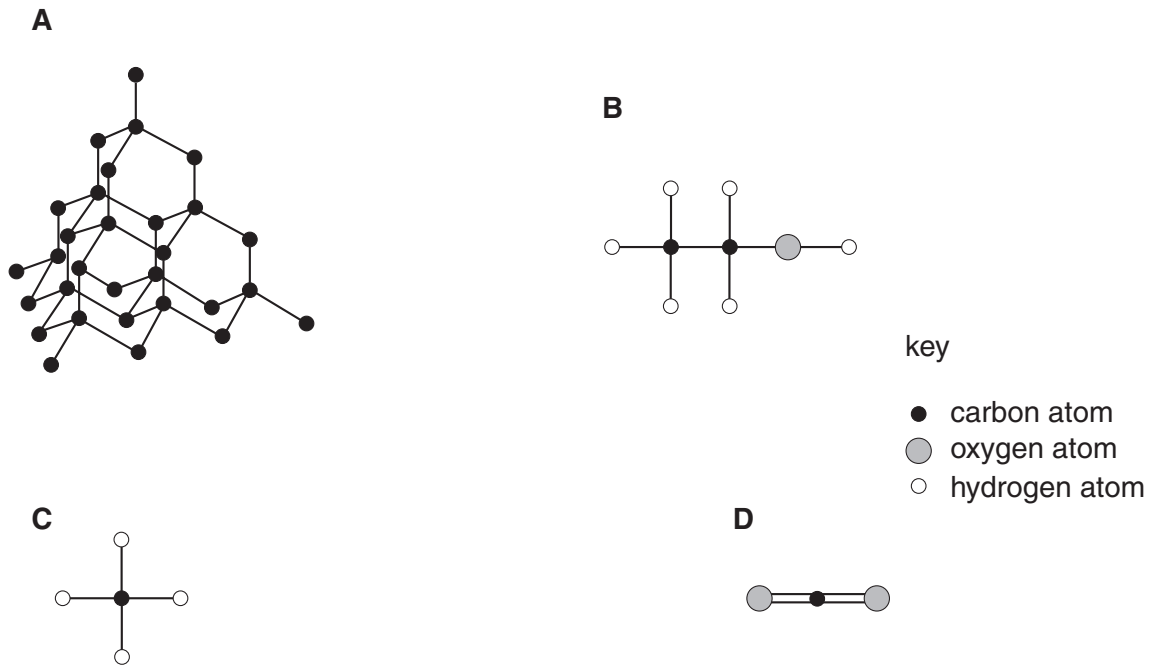


Fig. 3.1

State which of these substances is an element. Explain your answer.

.....

.....

..... [2]

(b) Potassium reacts with bromine to form compound **X**.

(i) Name compound **X**.

..... [1]

Compound **X** may be decomposed into potassium and bromine using electrolysis, as shown in Fig. 3.2.

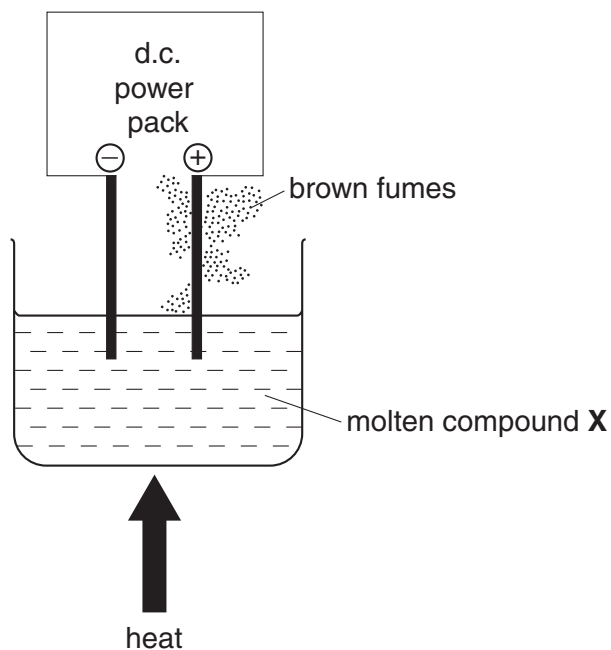


Fig. 3.2

(ii) Explain why compound **X** must be heated strongly in this process.

.....

 [2]

(iii) Explain why it is possible to predict at which electrode potassium will be formed.

.....
 [1]

(iv) A word equation for the reaction between potassium and bromine is shown below.



.....
 On the line below each substance write the term, chosen from the following list, which best describes its structure.

giant ionic **giant metallic** **giant molecular** **simple molecular**

[3]

4 Fig. 4.1 shows a lizard, which is a reptile.

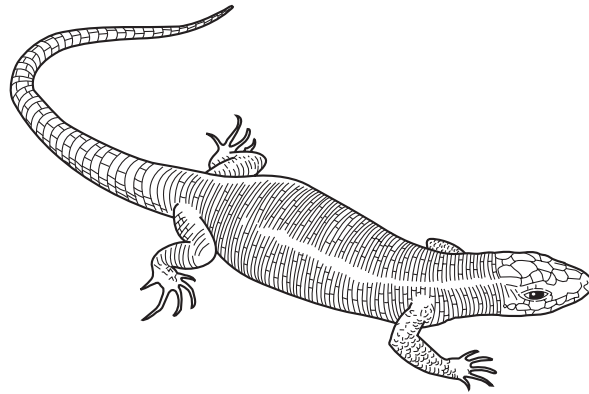


Fig. 4.1

(a) Describe two ways in which reptiles differ from amphibians.

- 1.
.....
- 2.
..... [2]

(b) The skin colour of this reptile is controlled by a gene with two alleles. Allele **G** gives green skin, and allele **g** gives brown skin.

(i) State the genotype of a brown lizard.

..... [1]

(ii) State the genotype of a homozygous green lizard.

..... [1]

- (iii) Complete the genetic diagram to show the offspring that could be produced from two parents with the genotypes **Gg** and **Gg**. (You may use the space below for your working.)

phenotypes of parents	<input type="text"/>	<input type="text"/>		
genotypes of parents	Gg	Gg		
gametes produced	<input type="text"/>	<input type="text"/>	<input type="text"/>	<input type="text"/>
genotypes of offspring	<input type="text"/>	<input type="text"/>	<input type="text"/>	<input type="text"/>

[3]

- (iv) State the ratio of green to brown offspring that would be expected from this cross.

..... green : brown [1]

5 Fig. 5.1 shows a hovercraft.

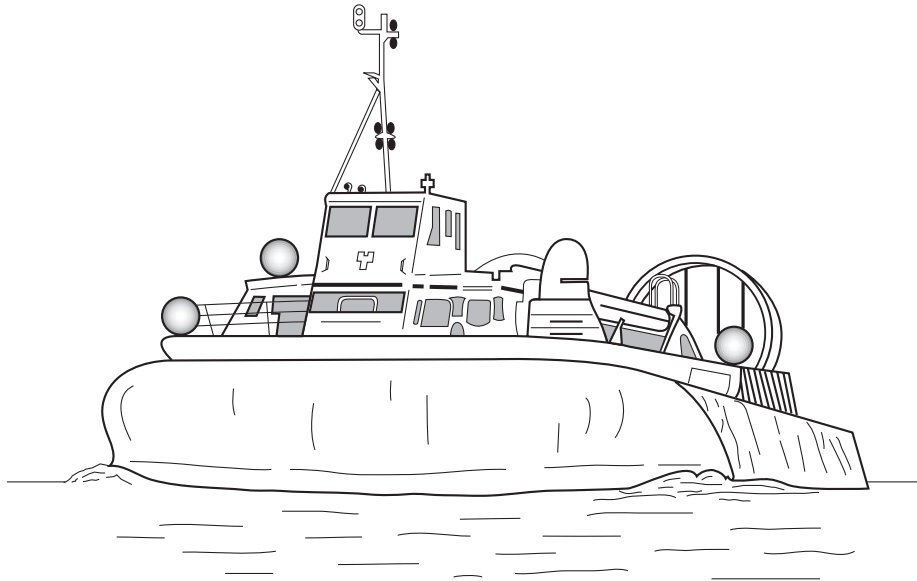


Fig. 5.1

- (a) When a hovercraft is moving, the friction between it and the surface it is travelling over is very low.

Explain the advantage of having this low friction.

.....

.....

..... [2]

- (b) A small hovercraft has a mass of 2000 kg. It hovers a few centimetres above the water. It is supported by a cushion of air, which covers an area of 8 m². The air pressure is kept at a pressure greater than atmospheric pressure.

- (i) If the Earth's gravitational field strength is 10 N/kg, state the weight of the hovercraft.

..... N [1]

- (ii) State the upward force that the air cushion must provide to keep the hovercraft hovering above the water.

..... N [1]

(c) Fig. 5.2 shows a speed-time graph for a hovercraft making a very short journey.

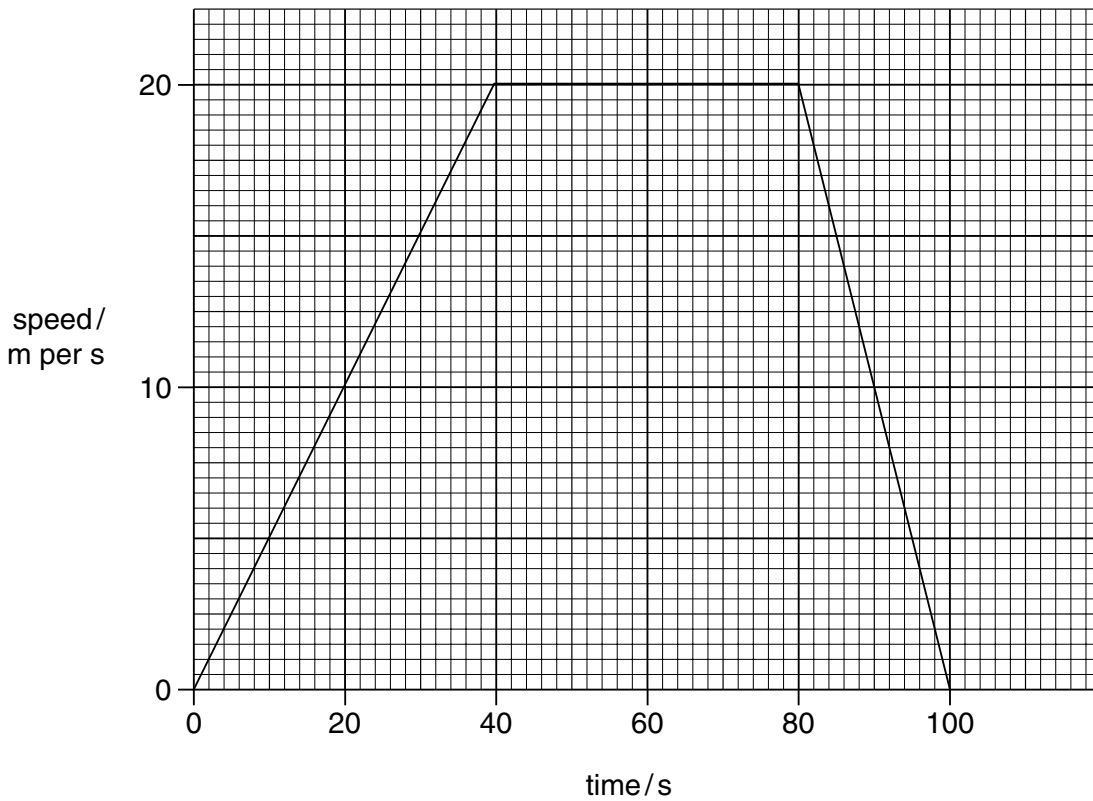


Fig. 5.2

(i) State the maximum speed of the hovercraft.

..... m/s [1]

(ii) For how many seconds does the hovercraft stay at its maximum speed?

..... seconds [1]

(iii) For how many seconds does the hovercraft move?

..... seconds [1]

(iv) Calculate the acceleration of the hovercraft during the first 40 seconds.

Show your working.

..... m/s² [2]

- 6 Petroleum (crude oil) is a fossil fuel. It consists of a mixture of compounds, most of which are hydrocarbons.

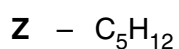
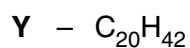
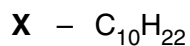
(a) Explain the meaning of the term *fossil fuel*.

.....

.....

..... [2]

(b) (i) The chemical formulae of three hydrocarbons, **X**, **Y** and **Z**, are shown below.



Complete Fig. 6.1 below by writing in the letters, **X**, **Y** or **Z**.

hydrocarbon	boiling point / °C
	344
	174
	36

Fig. 6.1

[1]

(ii) Explain briefly your answer to (i).

.....

..... [1]

Fig. 6.2 shows industrial apparatus used to separate petroleum into simpler mixtures.

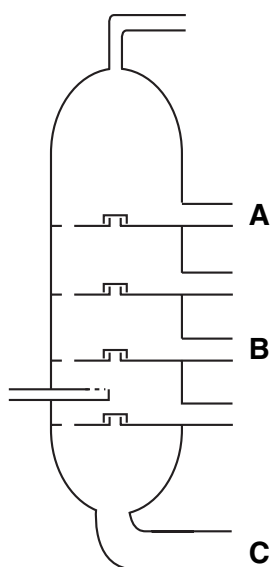


Fig. 6.2

(iii) Name the process which is carried out in this apparatus.

..... [1]

(iv) At which point, **A**, **B** or **C**, in Fig. 6.2 is C_5H_{12} most likely to be produced?

..... [1]

(c) In catalytic cracking, large saturated hydrocarbon molecules are broken down into simpler ones. Some of these simpler molecules are unsaturated.

Describe the difference between a saturated and an unsaturated hydrocarbon.

.....

.....

..... [2]

7 A plant growing in a pot was covered with a transparent polythene bag. The plant was placed in a sunny window and left there for 24 hours.

Samples of air were taken from the bag at hourly intervals. The concentration of oxygen and carbon dioxide in the air inside the bag was then measured. The results for oxygen are shown in Fig. 7.1.

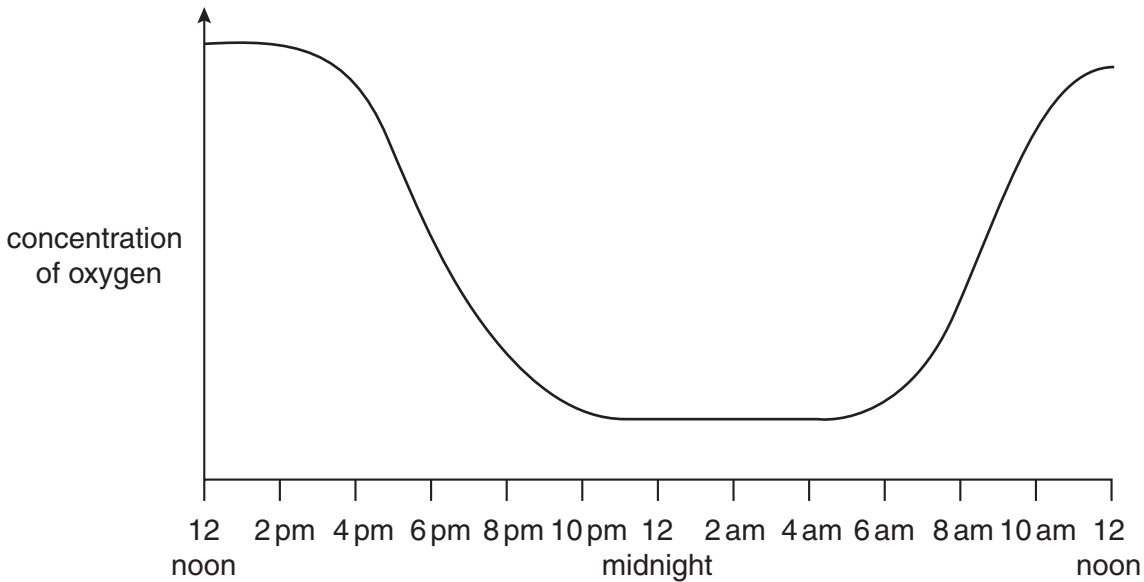


Fig. 7.1

(a) Explain why the bag covering the plant needed to be transparent.

.....
..... [2]

(b) With reference to photosynthesis and respiration, explain the shape of the curve in Fig. 7.1.

.....
.....
.....
..... [2]

(c) On Fig. 7.1, sketch a curve to show how the concentration of carbon dioxide inside the bag would vary during this 24 hour period. [2]

(d) Plants are the producers in a food chain.

(i) Explain what is meant by the term *producer*.

.....
..... [1]

(ii) Describe how energy is transferred from a plant to an animal in a food chain.

.....
.....
..... [2]

8 Read the passage and then answer the questions that follow.

Sounds can be recorded using a tape cassette recorder. This relies on electromagnetism.

A new recording tape has a coating of tiny magnetic particles that are arranged randomly. During recording, the electrical signal carrying the sound pattern is passed to a coil in the tape recorder. This produces a varying magnetic field which lines up the magnetic particles on the tape in patterns.

During playback, the magnetic pattern passes back over the coil inducing a varying electric current. This is then fed to an amplifier and on to a loudspeaker.

(a) (i) Suggest a suitable magnetic material for coating the tape.

..... [1]

(ii) Why should strong magnets be kept away from the recording tape?

.....
..... [1]

(iii) What useful energy change takes place in the loudspeaker?

..... energy to energy [2]

(iv) State the meaning of the term *magnetic field*.

.....
..... [1]

(b) A sound wave is represented by Fig. 8.1.

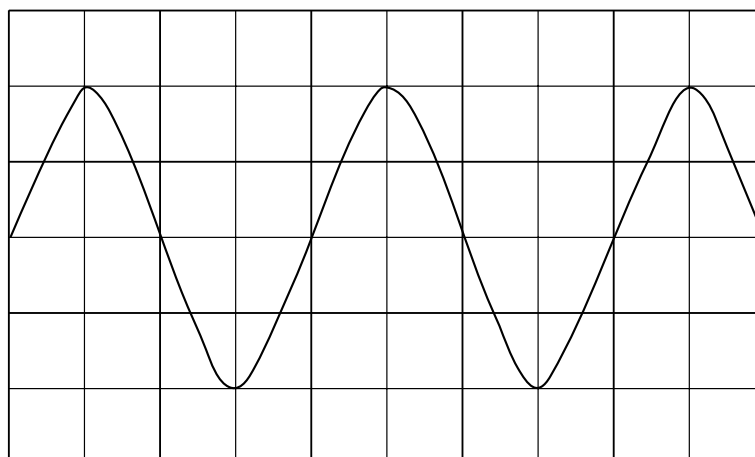


Fig. 8.1

- (i) On Fig. 8.1, show clearly the wavelength of the wave. [1]
- (ii) On Fig. 8.1, draw a second wave which has half the amplitude of the original wave, but the same frequency. [2]
- (iii) Does the wave that you have drawn represent a louder sound or a quieter sound than the original wave? Explain your answer.

.....

..... [1]

- 9 Fig. 9.1 shows information about two drugs.

name	chemical formula	use
cis-platin	$\text{N}_2\text{H}_6\text{Cl}_2\text{Pt}$	cancer treatment
aspirin	$\text{C}_9\text{H}_8\text{O}_4$	pain relief

Fig. 9.1

- (a) (i) What name is used for the treatment of diseases like cancer with chemicals such as cis-platin?
 [1]
- (ii) What general name is used to describe a drug used for pain relief?
 [1]
- (b) State the number of different elements shown in the chemical formula of cis-platin.
 [1]
- (c) Cis-platin contains the metal platinum. An atom of platinum has the proton number 78 and a nucleon number 195.
- (i) Calculate the number of neutrons in the nucleus of this platinum atom.
 [1]
- (ii) Name the element in Group I of the Periodic Table that is in the same period as platinum.
 [1]
- (iii) Platinum is a transition metal. Suggest **one** property of platinum which will be different from a metal in Group I.
 [1]
- (d) Suggest why scientists who develop new drugs study tropical rain forests, and are worried about the destruction of these forests.

 [2]

10 (a) (i) Describe how you would test a food to see if it contains protein.

.....
..... [1]

(ii) State what you would see if the result was positive.

..... [1]

(b) Outline how protein is digested and absorbed in the alimentary canal.

how it is digested
.....
.....

where and how it is absorbed
.....
..... [3]

(c) If a person eats more proteins than they need, the excess amino acids are converted to urea.

(i) Name the organ in which excess amino acids are converted to urea.

..... [1]

(ii) Describe what happens to the urea that is produced.

.....
.....
..... [2]

- 11 A television picture is produced by firing electrons at a screen. Fig. 11.1 shows how this is done.

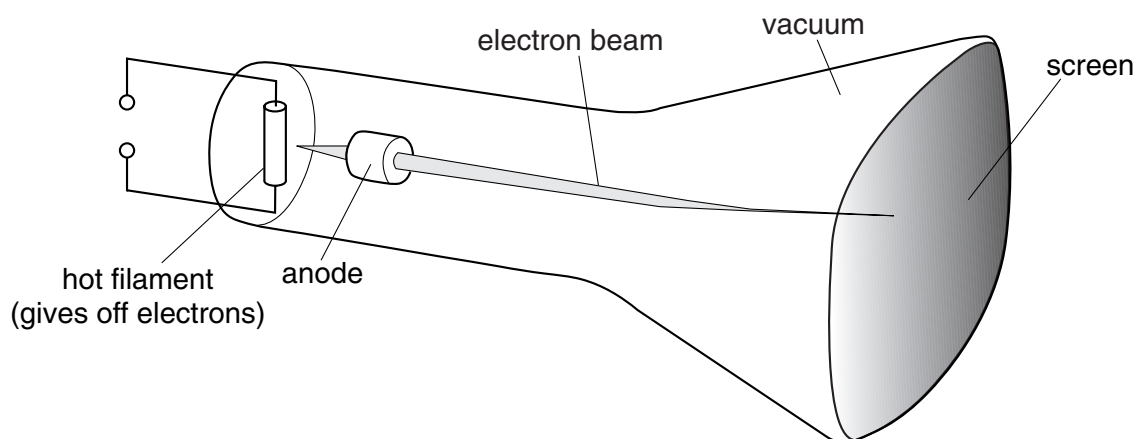


Fig. 11.1

- (a) When a television set is in use, a static electric charge builds up on the screen. Suggest why this happens.

.....

 [2]

- (b) To release electrons from the filament, electricity must flow through the filament. For this there must be a potential difference or voltage across the filament.

Using the correct symbol, draw on Fig. 11.1 where a voltmeter could be placed to measure the voltage across the filament. [2]

- (c) The filament is a piece of wire.

State two factors that affect the resistance of a piece of wire.

1.
 2. [2]

- (d) Two $100\ \Omega$ resistors are connected in series. Calculate their combined resistance.

..... Ω [1]

12 Fig. 12.1 shows three kinds of food.

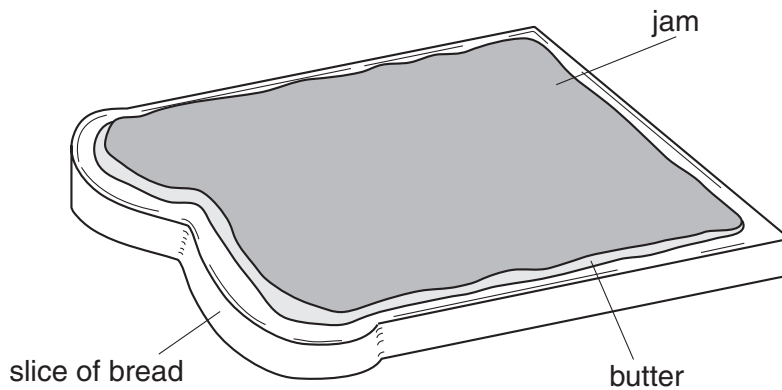



Fig. 12.1

- (a) (i) Bread contains starch, and jam contains sugars. Molecules of starch and sugar contain the same three elements bonded together.

Name these elements.

.....
 [2]

- (ii) Starch is formed from glucose in plants.

Draw part of a starch molecule using the symbol  to represent a glucose molecule.

[1]

- (iii) Use your answer to (ii) to explain the meaning of the term *polymer*.

.....

 [2]

- (b) When making bread, the first stage is to mix flour, water and yeast. Carbon dioxide gas forms in the mixture as a result of action by the yeast.

A student investigated this process using the apparatus shown in Fig. 12.2.

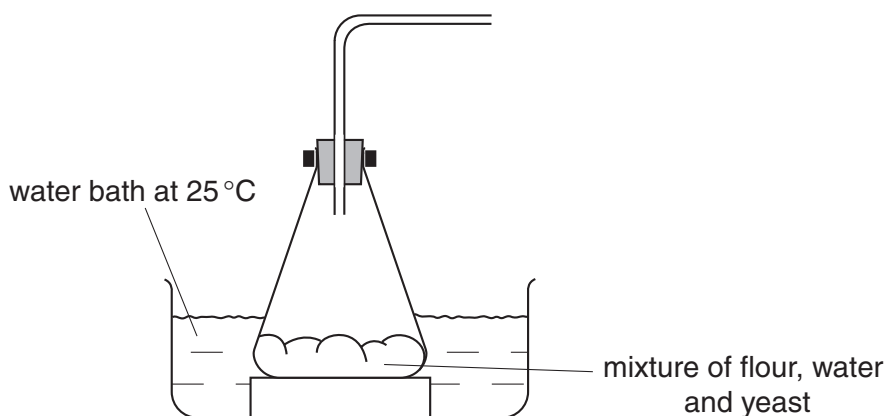


Fig. 12.2

Complete the diagram so that the apparatus could be used to prove that the gas given off is carbon dioxide. Label any additional apparatus and substances that are necessary. [2]

- (c) Bread, butter and jam are all types of colloid.

Fig. 12.3 shows the structure of a typical colloid. In this diagram, substance **B** is dispersed in substance **A**.

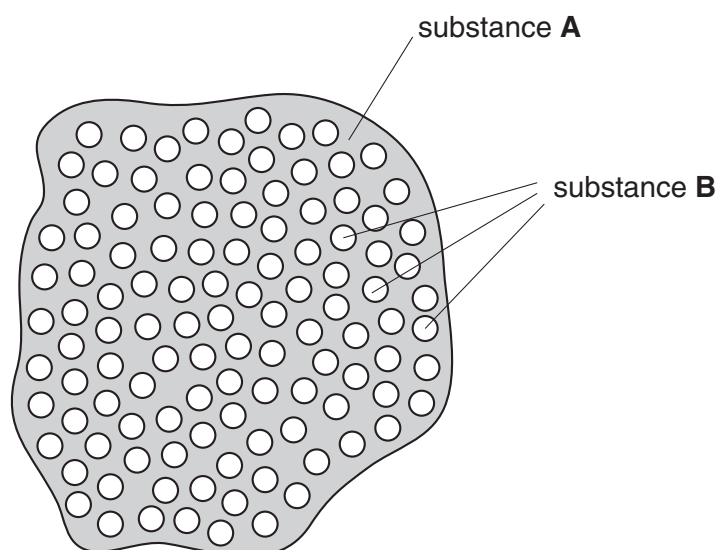


Fig. 12.3

Complete the table below using only the words **solid**, **liquid** or **gas**. The first row has been done for you.

food	type of colloid	substance A	substance B
bread	solid foam	solid	gas
butter	emulsion		
jam	gel		

[2]

Copyright Acknowledgements:

Question 11 Fig. 11.1. © D Sang. *Physics*. Cambridge University Press.

Cambridge International Examinations has made every effort to trace copyright holders, but if we have inadvertently overlooked any we will be pleased to make the necessary arrangements at the first opportunity.

BLANK PAGE

DATA SHEET
The Periodic Table of the Elements
Group

I	II	III	IV	V	VI	VII	O																																																																																																
7 Li Lithium	9 Be Beryllium	1 H Hydrogen					4 He Helium	2																																																																																															
3	4						20 Ne Neon	10																																																																																															
23 Na Sodium	24 Mg Magnesium	11 B Boron	12 C Carbon	14 N Nitrogen	16 O Oxygen	19 F Fluorine	35.5 Cl Chlorine																																																																																																
11	12	13	14	15	16	17	18																																																																																																
39 K Potassium	40 Ca Calcium	27 Al Aluminium	28 Si Silicon	31 P Phosphorus	32 S Sulphur	35.5 Cl Chlorine	40 Ar Argon																																																																																																
19	20	13	14	15	16	17	18																																																																																																
85 Rb Rubidium	88 Sr Strontium	70 Ga Gallium	73 Ge Germanium	75 As Arsenic	79 Se Selenium	80 Br Bromine	84 Kr Krypton																																																																																																
37	38	31	32	33	34	35	36																																																																																																
133 Cs Caesium	137 Ba Barium	115 In Indium	119 Sn Tin	122 Sb Antimony	128 Te Tellurium	127 I Iodine	131 Xe Xenon																																																																																																
55	56	49	50	51	52	53	54																																																																																																
226 Ra Radium	227 Ac Actinium	204 Tl Thallium	207 Pb Lead	209 Bi Bismuth	209 Po Polonium	209 At Astatine	226 Rn Radon																																																																																																
87	88	81	82	83	84	85	86																																																																																																
*58-71 Lanthanoid series																																																																																																							
†90-103 Actinoid series																																																																																																							
<table style="width: 100%; border-collapse: collapse;"> <tr> <td style="width: 5%;"></td> <td style="width: 5%;"></td> <td style="width: 5%;"></td> <td style="width: 5%;"></td> <td style="width: 5%;"></td> <td style="width: 5%;"></td> <td style="width: 5%;"></td> <td style="width: 5%;"></td> </tr> <tr> <td>140 Ce Cerium</td> <td>141 Pr Praseodymium</td> <td>144 Nd Neodymium</td> <td>150 Sm Samarium</td> <td>152 Eu Europium</td> <td>157 Gd Gadolinium</td> <td>159 Tb Terbium</td> <td>162 Dy Dysprosium</td> </tr> <tr> <td>58</td> <td>59</td> <td>60</td> <td>62</td> <td>63</td> <td>64</td> <td>65</td> <td>66</td> </tr> <tr> <td>232 Th Thorium</td> <td>232 Pa Protactinium</td> <td>238 U Uranium</td> <td>238 Np Neptunium</td> <td>238 Pu Plutonium</td> <td>238 Am Americium</td> <td>238 Cm Curium</td> <td>238 Bk Berkelium</td> </tr> <tr> <td>90</td> <td>91</td> <td>92</td> <td>93</td> <td>94</td> <td>95</td> <td>96</td> <td>97</td> </tr> <tr> <td>162 Dy Dysprosium</td> <td>165 Ho Holmium</td> <td>167 Er Erbium</td> <td>169 Tm Thulium</td> <td>173 Yb Ytterbium</td> <td>175 Lu Lutetium</td> <td>103 Lr Lawrencium</td> <td>103</td> </tr> <tr> <td>66</td> <td>67</td> <td>68</td> <td>69</td> <td>70</td> <td>71</td> <td>102</td> <td>103</td> </tr> <tr> <td>81</td> <td>82</td> <td>83</td> <td>84</td> <td>85</td> <td>86</td> <td>101</td> <td>102</td> </tr> <tr> <td>80 Hg Mercury</td> <td>82 Pb Lead</td> <td>83 Bi Bismuth</td> <td>84 Po Polonium</td> <td>85 At Astatine</td> <td>86 Rn Radon</td> <td>101 Md Mendelevium</td> <td>102 No Nobelium</td> </tr> <tr> <td>79</td> <td>80</td> <td>81</td> <td>82</td> <td>83</td> <td>84</td> <td>101</td> <td>102</td> </tr> <tr> <td>201 Hg Mercury</td> <td>201 Tl Thallium</td> <td>201 Pb Lead</td> <td>201 Bi Bismuth</td> <td>201 Po Polonium</td> <td>201 At Astatine</td> <td>201 Rn Radon</td> <td>201 Lr Lawrencium</td> </tr> <tr> <td>80</td> <td>81</td> <td>82</td> <td>83</td> <td>84</td> <td>85</td> <td>101</td> <td>102</td> </tr> </table>																140 Ce Cerium	141 Pr Praseodymium	144 Nd Neodymium	150 Sm Samarium	152 Eu Europium	157 Gd Gadolinium	159 Tb Terbium	162 Dy Dysprosium	58	59	60	62	63	64	65	66	232 Th Thorium	232 Pa Protactinium	238 U Uranium	238 Np Neptunium	238 Pu Plutonium	238 Am Americium	238 Cm Curium	238 Bk Berkelium	90	91	92	93	94	95	96	97	162 Dy Dysprosium	165 Ho Holmium	167 Er Erbium	169 Tm Thulium	173 Yb Ytterbium	175 Lu Lutetium	103 Lr Lawrencium	103	66	67	68	69	70	71	102	103	81	82	83	84	85	86	101	102	80 Hg Mercury	82 Pb Lead	83 Bi Bismuth	84 Po Polonium	85 At Astatine	86 Rn Radon	101 Md Mendelevium	102 No Nobelium	79	80	81	82	83	84	101	102	201 Hg Mercury	201 Tl Thallium	201 Pb Lead	201 Bi Bismuth	201 Po Polonium	201 At Astatine	201 Rn Radon	201 Lr Lawrencium	80	81	82	83	84	85	101	102
140 Ce Cerium	141 Pr Praseodymium	144 Nd Neodymium	150 Sm Samarium	152 Eu Europium	157 Gd Gadolinium	159 Tb Terbium	162 Dy Dysprosium																																																																																																
58	59	60	62	63	64	65	66																																																																																																
232 Th Thorium	232 Pa Protactinium	238 U Uranium	238 Np Neptunium	238 Pu Plutonium	238 Am Americium	238 Cm Curium	238 Bk Berkelium																																																																																																
90	91	92	93	94	95	96	97																																																																																																
162 Dy Dysprosium	165 Ho Holmium	167 Er Erbium	169 Tm Thulium	173 Yb Ytterbium	175 Lu Lutetium	103 Lr Lawrencium	103																																																																																																
66	67	68	69	70	71	102	103																																																																																																
81	82	83	84	85	86	101	102																																																																																																
80 Hg Mercury	82 Pb Lead	83 Bi Bismuth	84 Po Polonium	85 At Astatine	86 Rn Radon	101 Md Mendelevium	102 No Nobelium																																																																																																
79	80	81	82	83	84	101	102																																																																																																
201 Hg Mercury	201 Tl Thallium	201 Pb Lead	201 Bi Bismuth	201 Po Polonium	201 At Astatine	201 Rn Radon	201 Lr Lawrencium																																																																																																
80	81	82	83	84	85	101	102																																																																																																

Key

a	X
b	

a = relative atomic mass
X = atomic symbol
b = proton (atomic) number

The volume of one mole of any gas is 24 dm³ at room temperature and pressure (r.t.p.).