

Centre Number	Candidate Number	Name
---------------	------------------	------

CAMBRIDGE INTERNATIONAL EXAMINATIONS
International General Certificate of Secondary Education

CO-ORDINATED SCIENCES

0654/03

Paper 3

October/November 2003

2 hours

Candidates answer on the Question Paper.
No Additional Materials are required.

READ THESE INSTRUCTIONS FIRST

Write your Centre number, candidate number and name on all the work you hand in.
Write in dark blue or black pen in the spaces provided on the Question Paper.
You may use a soft pencil for any diagrams, graphs, tables or rough working.
Do not use staples, paper clips, highlighters, glue or correction fluid.

Answer **all** questions.

At the end of the examination, fasten all your work securely together.

The number of marks is given in brackets [] at the end of each question or part question.

A copy of the Periodic Table is printed on page 24.

For Examiner's Use	
1	
2	
3	
4	
5	
6	
7	
8	
9	
10	
Total	

If you have been given a label, look at the details. If any details are incorrect or missing, please fill in your correct details in the space given at the top of this page.

Stick your personal label here, if provided.

This document consists of **21** printed pages and **3** blank pages.



1 Explain the following.

- (a) A large piece of wood burns slowly but a cloud of sawdust (small wood particles) may explode if it is ignited.

.....

[2]

- (b) The battery in a personal stereo needs to be replaced regularly but a car battery does not.

.....

[2]

- (c) Water molecules contain oxygen but the glowing splint shown in Fig. 1.1 does not re-light.

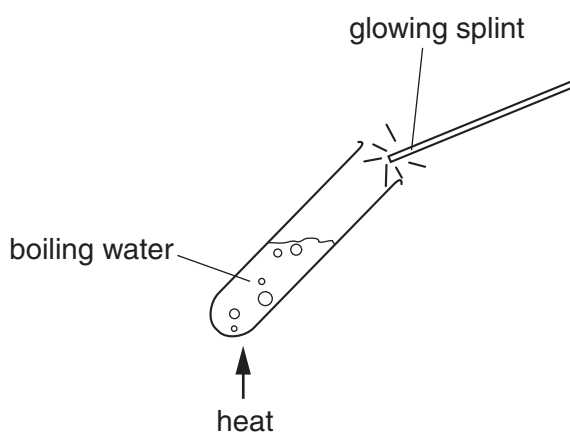


Fig. 1.1

.....

[2]

- (d) Magnesium oxide, MgO, has a very high melting point, but carbon dioxide, CO₂, has a very low melting point.

.....

[3]

- 2 (a) Fig. 2.1 shows a single ray of white light being shone into a triangular glass block (prism).

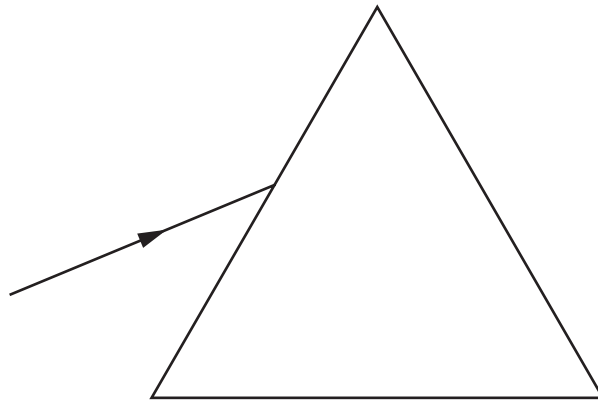


Fig. 2.1

Complete the diagram to show what happens to the ray of light. [3]

- (b) Waves of blue light and waves of red light are both part of the electromagnetic spectrum.

State **one** way in which the waves of blue light differ from the waves of red light.

.....[1]

- (c) Waves of yellow light travel at 300 000 000 m/s and have a wavelength of 0.0000006 m.

Calculate the frequency of the light waves.
Show your working and state any formula that you use.

.....
.....[3]

3 (a) A boy's hand accidentally touches a very hot pan. The muscles in his arm contract rapidly, pulling his arm away.

(i) What is the name for this type of automatic response to a stimulus?

.....[1]

(ii) List, in order, the three types of nerve cell along which information passes from the pain receptor in the boy's hand to the muscles in his arm.

1

2

3

[2]

(b) Fig. 3.1 represents the biceps muscle and some of the bones in the boy's arm. He is lifting a mass of 2 kg.

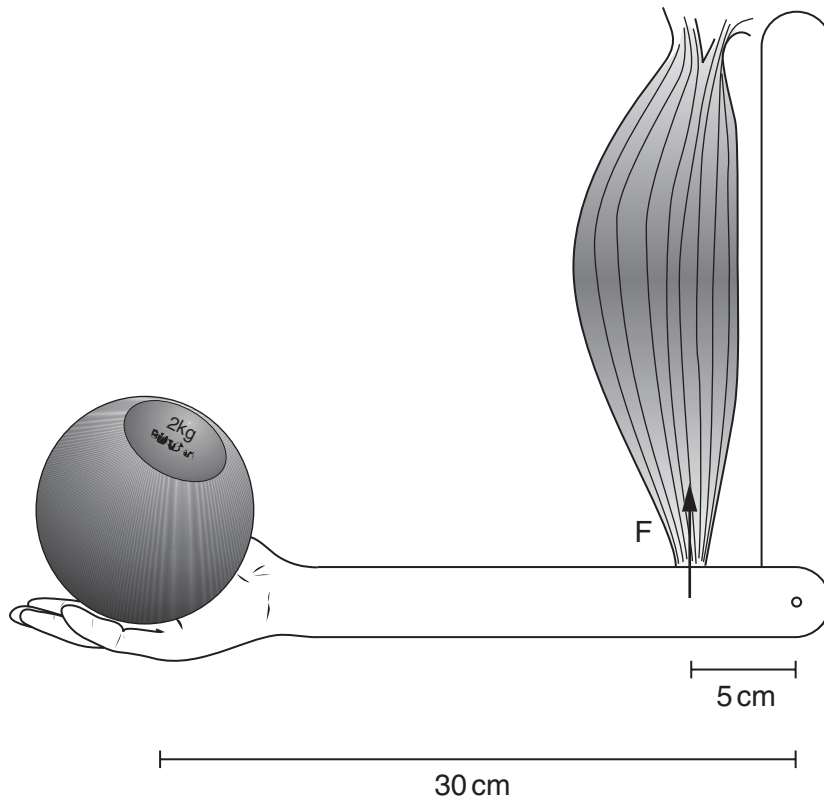


Fig. 3.1

- (i) Calculate the force **F** that must be exerted by the biceps muscle in order to hold the mass steady. Show your working.

..... [3]

- (ii) Describe and explain where the energy comes from which is used by the muscle to produce this force.

.....
.....
.....
.....
.....[3]

- (iii) The biceps and triceps muscles in the arm are a pair of *antagonistic* muscles. Explain the meaning of this term.

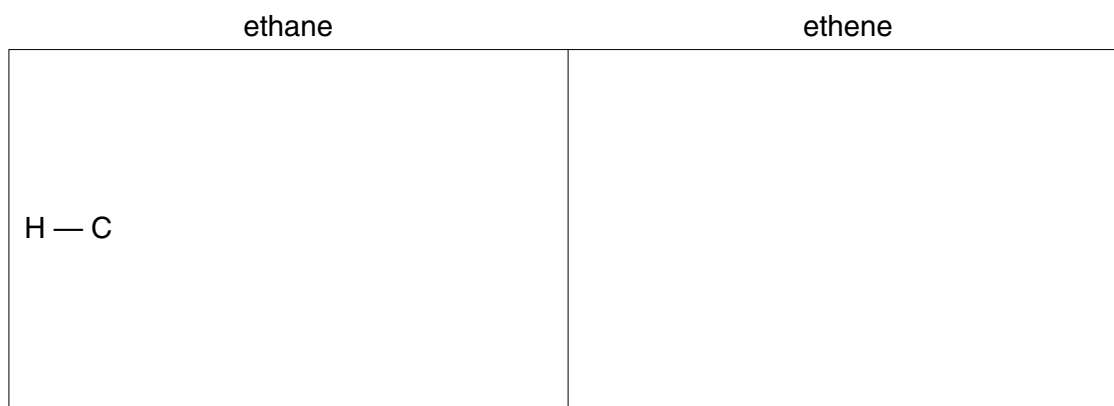
.....
.....
.....[2]

4 In the petrochemicals industry, the saturated hydrocarbon ethane, C_2H_6 , is converted into the unsaturated hydrocarbon, ethene, C_2H_4 .

(a) (i) Name the process which converts saturated into unsaturated hydrocarbons.

.....[1]

(ii) Draw the displayed chemical formulae of ethane and ethene. The formula of ethane has been started for you.



[2]

(b) In a typical industrial process it is found that when 1 mole of ethane is used, only 0.9 moles of ethene is produced.

A research scientist studies the conversion of 300 g of ethane into ethene.

(i) Calculate the number of moles of ethane used by the research scientist.
Show your working.

..... [2]

(ii) State the number of moles of ethene produced.

..... [1]

(iii) Calculate the mass of ethene produced.
Show your working.

..... [2]

(c) In industry much ethene is converted into ethanol (alcohol).

(i) Describe briefly how ethene is converted into ethanol.

.....

.....

.....[2]

(ii) Fig. 4.1 shows apparatus used to study what happens when ethanol vapour is passed over a hot catalyst.

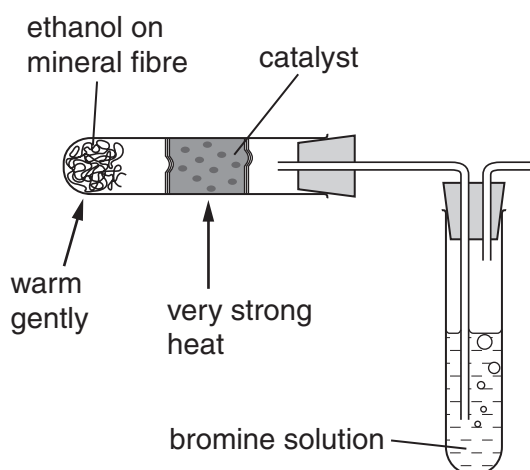


Fig. 4.1

During this process, the bromine solution is decolourised.

State and explain what this experiment shows about the type of compound formed when ethanol passes over the hot catalyst.

.....

.....

.....[2]

(d) Ethene may be converted into the thermoplastic material poly(ethene).

Explain, in terms of molecules, what happens when a thermoplastic material such as poly(ethene) is heated.

.....

.....

.....[2]

- 5 Fig. 5.1 shows a tumble dryer. The dryer uses electricity to tumble the clothes and to heat them up.

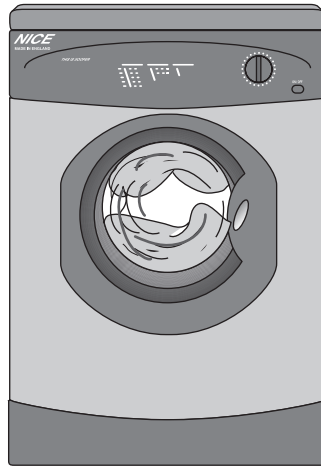


Fig. 5.1

- (a) After the tumble dryer has been used, it is noticed that dust and fluff are sticking to the plastic door. The owner thinks that static electricity is the cause.

- (i) Suggest why a static electrical charge may have been produced in the tumble dryer.

.....

[2]

- (ii) Name the particles that are transferred when an object gains a static electrical charge.

.....[1]

- (b) When the tumble dryer is used for 30 minutes, 3 600 000 joules of energy are used.

- (i) How many joules of energy are used per second?

..... joules [1]

- (ii) What is the power of the tumble dryer?

.....[1]

- (iii) The voltage supplied to the tumble dryer is 250 V.

Use the equation

$$\text{power} = \text{voltage} \times \text{current}$$

to calculate the current required by the tumble dryer.

.....[2]

- (iv) The heater in the tumble dryer has a resistance of 125 Ω .

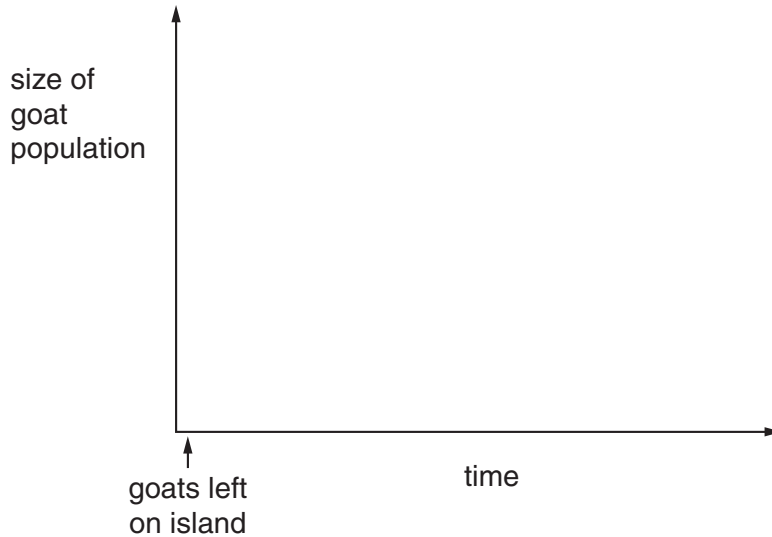
Calculate the current flowing through the heater.
Show your working and state any formula that you use.

.....[2]

6 In the nineteenth century, a ship travelling across the southern Pacific Ocean stopped at an island to collect fresh water. The sailors left one male goat, **P**, and two female goats, **Q** and **R**, on the island, hoping that they would breed and so provide food if the ship stopped there again.

(a) There were no predators living on the island. The goats were able to feed on grass and other plants, but this food was in a limited supply.

(i) On the axes below, sketch a curve to show what would happen to the size of the goat population on the island over the next few years.



[2]

(ii) On your graph, indicate the point at which food supply became a limiting environmental factor for the goat population. [1]

(b) Goats **P**, **Q** and **R** all had short hair. They were all homozygous for allele **A**. However, a mutation happened in the testes of goat **P**, so that some of its sperm contained a new allele, **a**. Allele **a** was recessive, and coded for long hair.

(i) What is meant by the term *mutation*?

.....
.....
.....[2]

(ii) Explain why none of the offspring of goats **P**, **Q** and **R** had long hair.

.....
.....
.....[2]

- (iii) In the following year, the offspring from the three original goats bred with each other and with their parents. Some of their offspring did have long hair.

Assuming that no new mutations appeared, explain how this happened. (You may use a genetic diagram if it makes your answer clearer.)

.....
.....
.....[3]

- (c) The winters on the island were very cold. The goats needed to eat more food in winter to keep themselves warm. The long-haired goats did not need as much food as the short-haired goats.

- (i) Suggest why the long-haired goats did not need as much food as the short-haired goats during the winter.

.....
.....
.....
.....
.....[3]

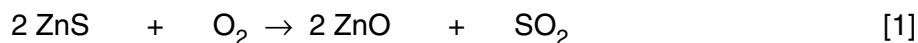
- (ii) Twenty years after the goats were first introduced to the island, almost all of the goat population had long hair. Explain how this would have happened.

.....
.....
.....
.....[3]

- 7 Zinc metal is extracted from rocks containing zinc sulphide, ZnS. There are three main steps in the extraction process.
- step 1 zinc sulphide is converted into zinc oxide
 step 2 zinc oxide is converted into zinc sulphate
 step 3 zinc sulphate solution is electrolysed to produce zinc

(a) In step 1, zinc sulphide is heated in air.

- (i) The equation below for this reaction is not balanced. Balance the equation.



- (ii) Suggest why the nitrogen in the air does not react with zinc sulphide.

.....
[1]

(b) In step 2, zinc oxide, which is a base, is converted into the salt, zinc sulphate.

- (i) Write a **word** equation for this reaction.

.....[2]

- (ii) Name this type of chemical reaction in (i).

.....[1]

(c) In step 3, concentrated zinc sulphate solution is electrolysed. Zinc sulphate solution is an electrolyte containing aqueous zinc ions, Zn^{2+} . Fig. 7.1 shows a simplified diagram of part of the apparatus used for this electrolysis.

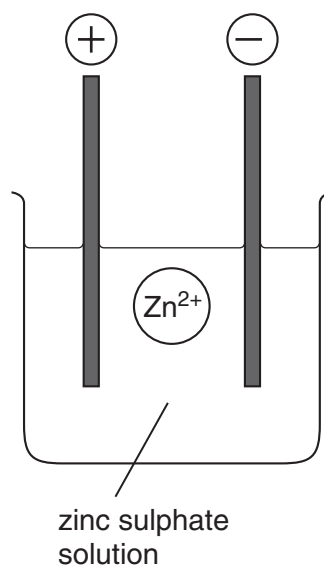


Fig. 7.1

Describe how the zinc ion shown in Fig. 7.1 is changed into a zinc atom during electrolysis.

.....
.....
.....
.....
.....[4]

(d) Describe what is observed when excess sodium hydroxide solution is added to zinc sulphate solution.

.....
.....
.....[2]

(e) Fig. 7.2 shows a two-pin electrical plug.

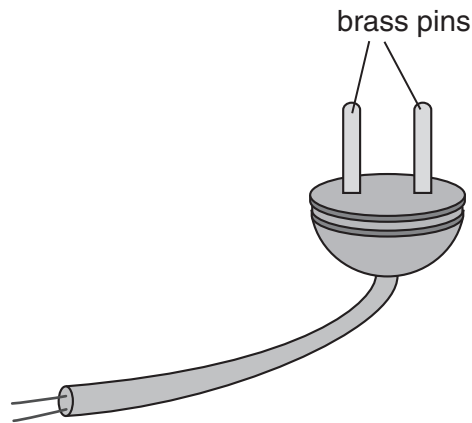


Fig. 7.2

The pins are subjected to forces whenever the plug is connected to the electrical supply socket.

Explain why brass, and not a pure metal such as copper, is used to make the plug pins. You should draw diagrams of the atomic arrangement in both copper and brass to help your explanation.

.....

.....

.....[3]

(Question 8 can be found on page 16)

8 Radon is a radioactive gas. It escapes from underground rocks and causes part of natural background radiation.

(a) State **one** other natural source of background radiation.

.....[1]

(b) A sample of radon-220 was investigated to find its half-life. The activity of the isotope was measured every 30 seconds for 6 minutes. Fig. 8.1 shows the results.

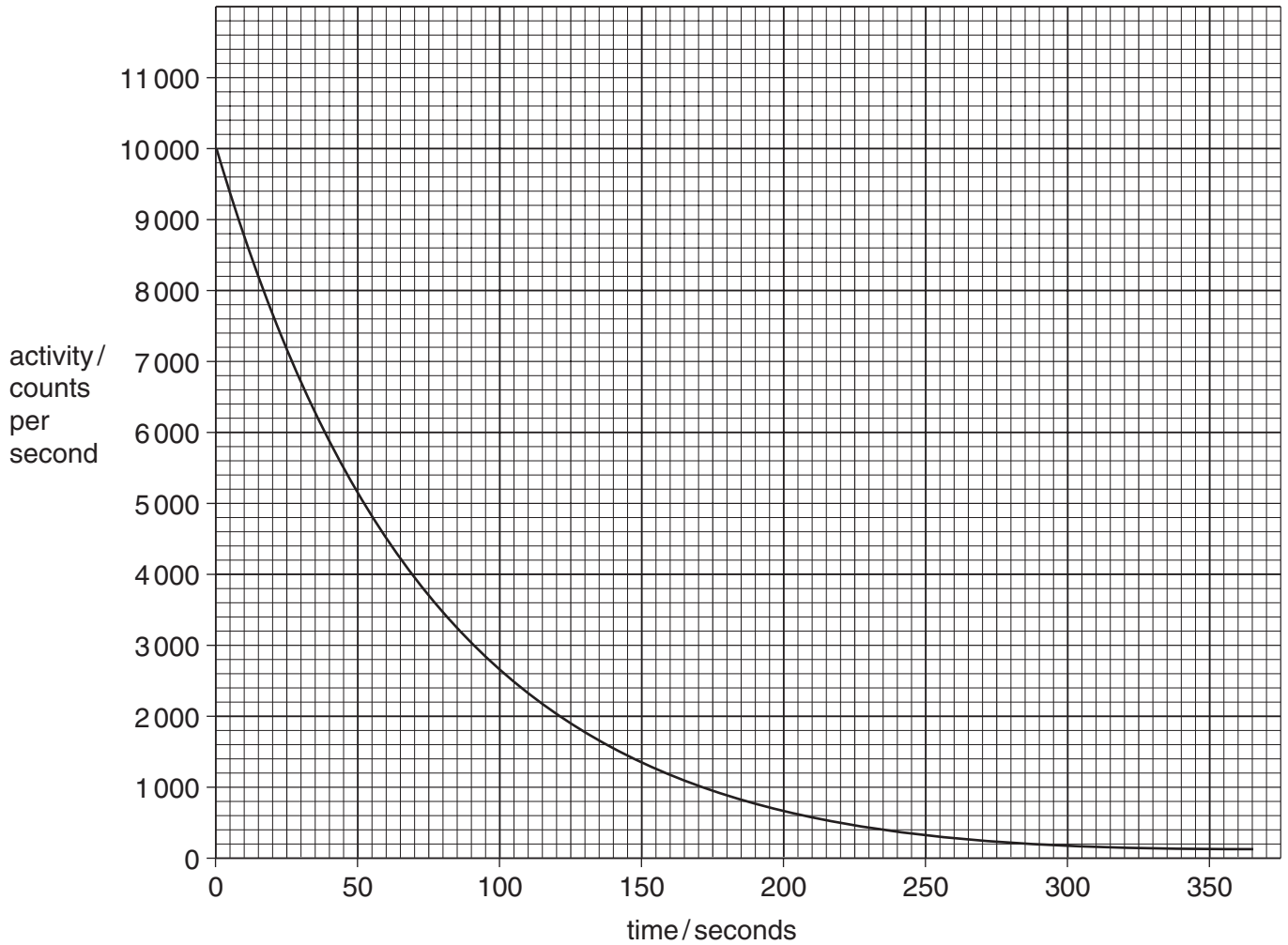


Fig. 8.1

(i) Use the graph to work out the activity of the isotope after 100 seconds.

.....[1]

(ii) Use the graph to calculate the half-life of the isotope. Show your working on the graph.

.....[2]

(iii) There are several isotopes of radon.
Explain the meaning of the word *isotope*.

.....
.....[2]

(c) Radon-220 has a short half-life and emits alpha particles.

(i) Suggest why the presence of radon gas in buildings could be a health hazard.

.....
.....[2]

(ii) When an atom of radon-220 has emitted an alpha particle, how many protons and how many neutrons remain in the atom?
Explain your answers.

.....
.....
.....
.....[3]

9 (a) Describe the differences between the *cell membrane* and *cell wall* of a plant cell.

.....
.....
.....
.....[3]

(b) (i) Explain how water enters the root hairs of a plant.

.....
.....
.....
.....[3]

(ii) Describe how the water is transported from the roots to the leaves.

.....
.....
.....
.....[2]

(c) If a plant loses more water from its leaves than it can take up through its roots, its stems and leaves become soft and begin to droop.

Explain why this happens.

.....
.....
.....
.....[2]

- 10 (a) A length of wire is attached to a sensitive ammeter as shown in Fig. 10.1. The wire is moved up and down between the two poles of the magnet.

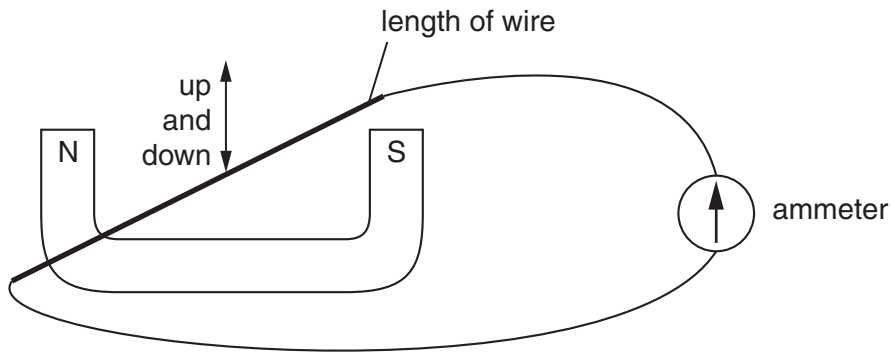


Fig. 10.1

Fig. 10.2 shows the ammeter scale and pointer with zero in the middle.

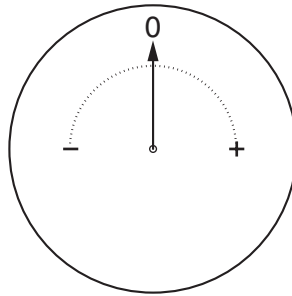


Fig. 10.2

Describe how the pointer will move when the wire is moved downwards and then upwards between the poles of the magnet.

.....

.....

.....[2]

- (b) Fig. 10.3 shows a simple a.c. generator. It consists of a coil of wire rotating between the poles of a permanent magnet. The output is fed to an external circuit through brushes making contact with two slip rings.

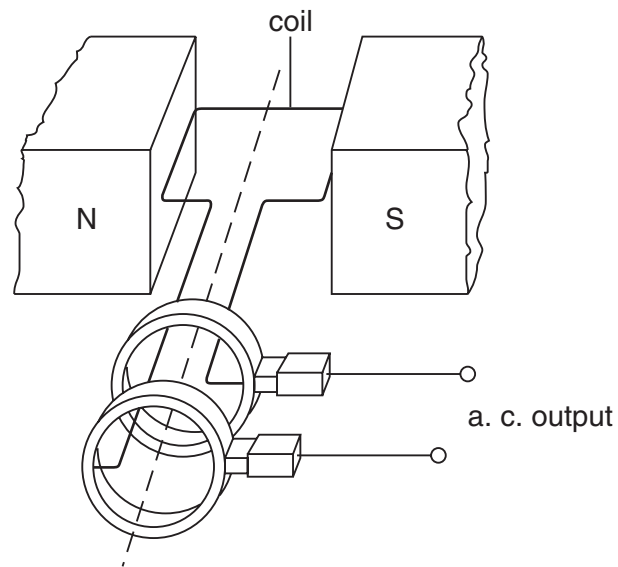


Fig. 10.3

State two factors on which the size of the output current depends.

1.
2. [2]

- (c) The generator at a power station produces a large current at a low voltage. The voltage is increased by a transformer before the electricity is distributed through power lines to distant places.

Describe how a transformer changes the voltage of the electrical output from the power stations.

Your answer **must** include the following terms.

primary coil
primary voltage
induced current

secondary coil
secondary voltage
changing magnetic field

Include a diagram in your answer.

.....

.....

.....

.....

.....

.....

.....

.....[5]

DATA SHEET
The Periodic Table of the Elements

		Group																																																																																																																																																																																																																																																																																																																																																																																																																																																																																																																																																																																																																																																																																																																																																																																																																																																																																																																																																																																																																																					
		I	II	III	IV	V	VI	VII	0																																																																																																																																																																																																																																																																																																																																																																																																																																																																																																																																																																																																																																																																																																																																																																																																																																																																																																																																																																																																																														
		1 H Hydrogen 1																																																																																																																																																																																																																																																																																																																																																																																																																																																																																																																																																																																																																																																																																																																																																																																																																																																																																																																																																																																																																																					
7	9	3	4	5	6	7	8	9	10	11	12	13	14	15	16	17	18	19	20	21	22	23	24	25	26	27	28	29	30	31	32	33	34	35	36	37	38	39	40	41	42	43	44	45	46	47	48	49	50	51	52	53	54	55	56	57	58	59	60	61	62	63	64	65	66	67	68	69	70	71	72	73	74	75	76	77	78	79	80	81	82	83	84	85	86	87	88	89	90	91	92	93	94	95	96	97	98	99	100	101	102	103	104	105	106	107	108	109	110	111	112	113	114	115	116	117	118	119	120	121	122	123	124	125	126	127	128	129	130	131	132	133	134	135	136	137	138	139	140	141	142	143	144	145	146	147	148	149	150	151	152	153	154	155	156	157	158	159	160	161	162	163	164	165	166	167	168	169	170	171	172	173	174	175	176	177	178	179	180	181	182	183	184	185	186	187	188	189	190	191	192	193	194	195	196	197	198	199	200	201	202	203	204	205	206	207	208	209	210	211	212	213	214	215	216	217	218	219	220	221	222	223	224	225	226	227	228	229	230	231	232	233	234	235	236	237	238	239	240	241	242	243	244	245	246	247	248	249	250	251	252	253	254	255	256	257	258	259	260	261	262	263	264	265	266	267	268	269	270	271	272	273	274	275	276	277	278	279	280	281	282	283	284	285	286	287	288	289	290	291	292	293	294	295	296	297	298	299	300	301	302	303	304	305	306	307	308	309	310	311	312	313	314	315	316	317	318	319	320	321	322	323	324	325	326	327	328	329	330	331	332	333	334	335	336	337	338	339	340	341	342	343	344	345	346	347	348	349	350	351	352	353	354	355	356	357	358	359	360	361	362	363	364	365	366	367	368	369	370	371	372	373	374	375	376	377	378	379	380	381	382	383	384	385	386	387	388	389	390	391	392	393	394	395	396	397	398	399	400	401	402	403	404	405	406	407	408	409	410	411	412	413	414	415	416	417	418	419	420	421	422	423	424	425	426	427	428	429	430	431	432	433	434	435	436	437	438	439	440	441	442	443	444	445	446	447	448	449	450	451	452	453	454	455	456	457	458	459	460	461	462	463	464	465	466	467	468	469	470	471	472	473	474	475	476	477	478	479	480	481	482	483	484	485	486	487	488	489	490	491	492	493	494	495	496	497	498	499	500	501	502	503	504	505	506	507	508	509	510	511	512	513	514	515	516	517	518	519	520	521	522	523	524	525	526	527	528	529	530	531	532	533	534	535	536	537	538	539	540	541	542	543	544	545	546	547	548	549	550	551	552	553	554	555	556	557	558	559	560	561	562	563	564	565	566	567	568	569	570	571	572	573	574	575	576	577	578	579	580	581	582	583	584	585	586	587	588	589	590	591	592	593	594	595	596	597	598	599	600	601	602	603	604	605	606	607	608	609	610	611	612	613	614	615	616	617	618	619	620	621	622	623	624	625	626	627	628	629	630	631	632	633	634	635	636	637	638	639	640	641	642	643	644	645	646	647	648	649	650	651	652	653	654	655	656	657	658	659	660	661	662	663	664	665	666	667	668	669	670	671	672	673	674	675	676	677	678	679	680	681	682	683	684	685	686	687	688	689	690	691	692	693	694	695	696	697	698	699	700	701	702	703	704	705	706	707	708	709	710	711	712	713	714	715	716	717	718	719	720	721	722	723	724	725	726	727	728	729	730	731	732	733	734	735	736	737	738	739	740	741	742	743	744	745	746	747	748	749	750	751	752	753	754	755	756	757	758	759	760	761	762	763	764	765	766	767	768	769	770	771	772	773	774	775	776	777	778	779	780	781	782	783	784	785	786	787	788	789	790	791	792	793	794	795	796	797	798	799	800	801	802	803	804	805	806	807	808	809	810	811	812	813	814	815	816	817	818	819	820	821	822	823	824	825	826	827	828	829	830	831	832	833	834	835	836	837	838	839	840	841	842	843	844	845	846	847	848	849	850	851	852	853	854	855	856	857	858	859	860	861	862	863	864	865	866	867	868	869	870	871	872	873	874	875	876	877	878	879	880	881	882	883	884	885	886	887	888	889	890	891	892	893	894	895	896	897	898	899	900	901	902	903	904	905	906	907	908	909	910	911	912	913	914	915	916	917	918	919	920	921	922	923	924	925	926	927	928	929	930	931	932	933	934	935	936	937	938	939	940	941	942	943	944	945	946	947	948	949	950	951	952	953	954	955	956	957	958	959	960	961	962	963	964	965	966	967	968	969	970	971	972	973	974	975	976	977	978	979	980	981	982	983	984	985	986	987	988	989	990	991	992	993	994	995	996	997	998	999	1000

*58-71 Lanthanoid series
†90-103 Actinoid series

Key

a	X
a = relative atomic mass	
X = atomic symbol	
b = proton (atomic) number	

The volume of one mole of any gas is 24 dm³ at room temperature and pressure (r.t.p.).