

Please write clearly, in block capitals.

Centre number

--	--	--	--	--

Candidate number

--	--	--	--

Surname

Forename(s)

Candidate signature

AS Level

DESIGN AND TECHNOLOGY (FASHION & TEXTILES)

Date of Exam

Morning

Time allowed: 1h30m

Materials

For this paper you must have:

- normal writing and drawing instruments
- a scientific calculator

Instructions

- Use black ink or black ball-point pen. Use pencil only for drawing.
- Fill in the boxes at the top of this page.
- Answer all questions.
- You must answer the questions in the spaces provided. Do not write on blank pages.
- Do all rough work in this book. Cross through any work that you do not want to be marked.

Information

- The marks for questions are shown in brackets
 - The maximum marks for this paper is 80
 - There are 45 marks in Section A and 35 marks in Section B.
-

SECTION A: Technical Principles

This section contains multiple choice questions. For each multiple choice question you should shade in **one** lozenge.

1 Which **one** of the following is a natural fibre?

A Acrylic

B Nylon

C Polyester

D Ramie

[1 mark]

2 The chart below lists commercial names of fibres and fabrics. Complete the chart to give the classification of each fibre.

An example has been completed for you.

[3 marks]

Commercial name	Classification of fibre or fabric
Lycra®	elastane
Tactel®	
Modal®	
Tencel®	

3

The data in **Figure 1** below shows the sales of four different types of socks in a one month period.

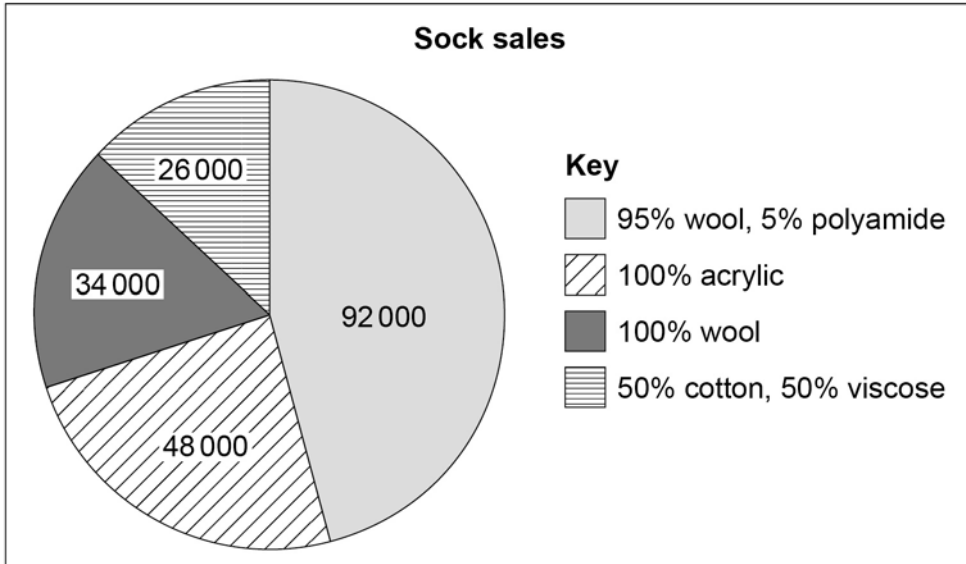


Figure 1

What percentage of socks sold do not contain synthetic fibres?
Show your working out.

[2 marks]

4

Look at the fabric construction in **Figure 2** below.

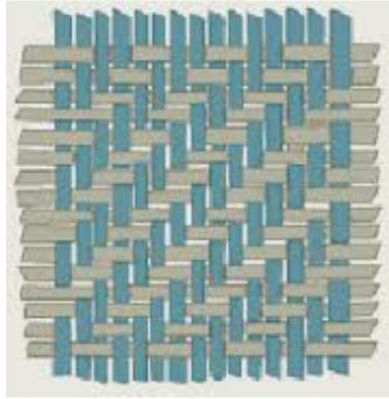


Figure 2

Which fabric is shown in **Figure 2**?

A Calico

B Denim

C Satin

D Velvet

[1 mark]

DO NOT WRITE ON THIS PAGE

7 Look at the pleated dress in **Figure 3** below.



Figure 3

8	.	1
---	---	---

 The use of a fabric with a one way design will make a garment more expensive to produce.

Give three other ways in which a one way pattern or nap can impact on the use of fabric when making garments.

[3 marks]

1.

2.

3.

DO NOT WRITE ON THIS PAGE

10

Study the T-shirt in **Figure 4** and the diagram in **Figure 5**.



Figure 4

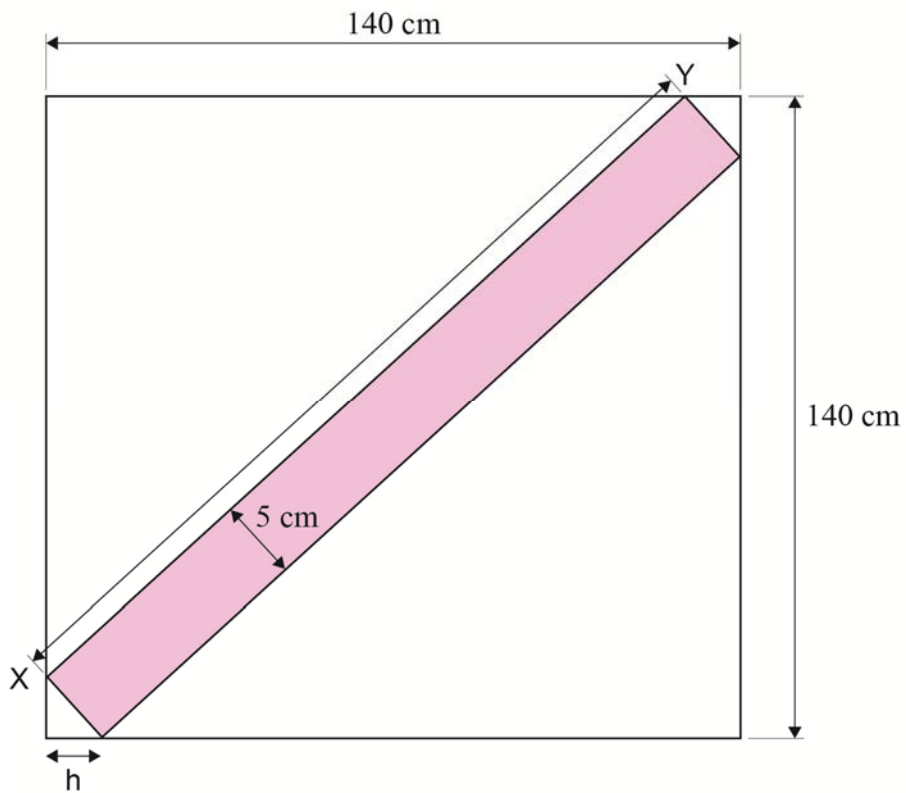


Figure 5

Figure 5 shows a square piece of fabric from which the frill around the bottom hem of the t-shirt is cut.

The frill around the bottom hem is made from one piece cut on the bias.

The depth of the frill is 5cm. The dimensions of the fabric are 140cm x 140cm

The distance from the corner of the fabric to the corner of the hem is labelled as h .

The length of the frill is the distance between X and Y.

Calculate the length between X and Y.

Give your answer to the nearest whole centimetre.

[3 marks]

SECTION B: Design and Making Principles

11 Explain why market research is important for designers.

[4 marks]

- 12** A long skirt is made from three pieces of fabric. The skirt front and the skirt back are identical. The skirt pieces are laid out in the pattern shown in **Figure 6** below.

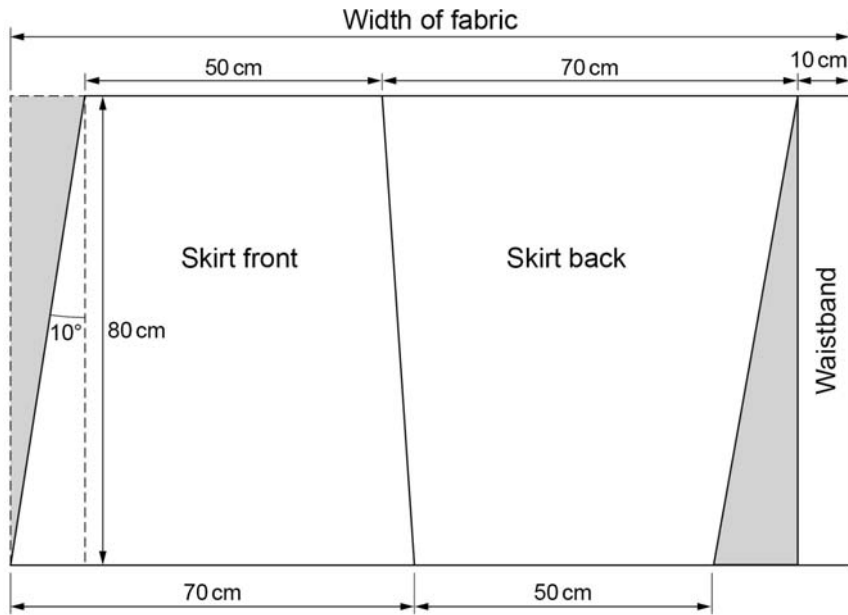


Figure 6

The shaded area of the pattern shows the amount of wastage there would be if the three pieces were cut out in this way.

What is the minimum width of fabric that would be required to cut out the three pieces in the above pattern?

Round up your answer to the nearest whole cm.

[4 marks]

- 13 . 2 Look the dress in **Figure 7** below. The dress fabric has been digitally printed. Evaluate the reasons for using this method.



Figure 7

[9 marks]

13 . 3 The dress in **Figure 7** on **page 20** is a bespoke dress.
Give **three** reasons why the dress is produced in this way.

[3 marks]

1.

2.

3.

aqa.org.uk

Copyright © 2017 AQA and its licensors. All rights reserved.

AQA Education (AQA) is a registered charity (registered charity number 1073334) and a company limited by guarantee registered in England and Wales (company number 3644723). Registered address: AQA, Devas Street, Manchester M15 6EX

09 February 2017
